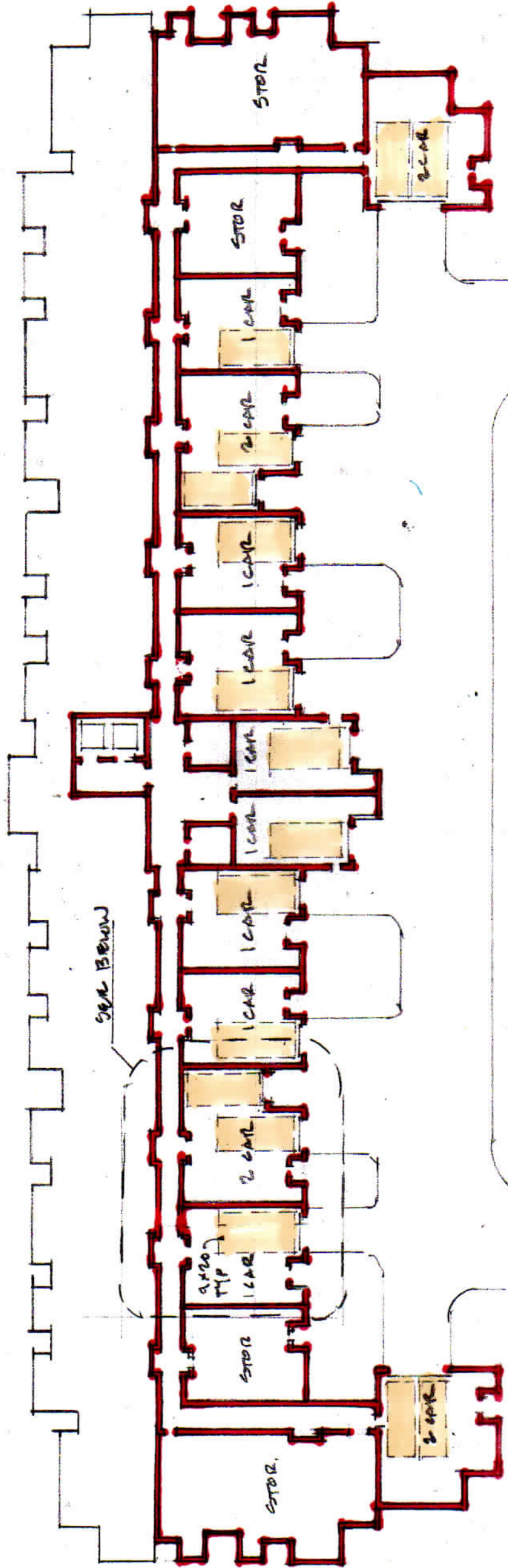
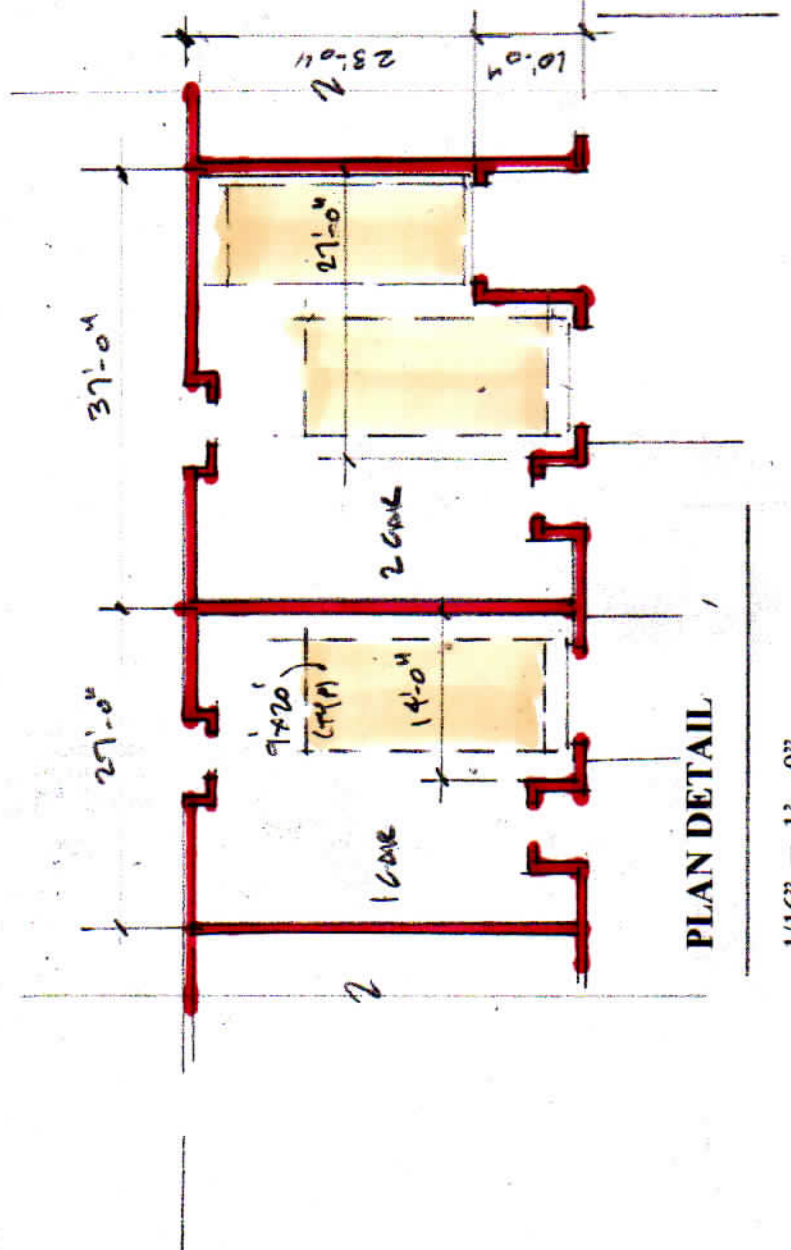


RECEIVED FOR FILING
East Haven
DATE 1/27/2023 TIME 01:34 PM
TOWN CLERK'S OFFICE
EAST HAVEN, CONN
Lisa Balter
TOWN CLERK



BASEMENT FLOOR PLAN

1/32" = 1'-0"



PLAN DETAIL

1/16" = 1'-0"

GARAGE PARKING

THE BLUFFS

31 Sperry Lane
East Haven, CT

Stein | Troost architecture
One Morgan Avenue, Norwalk CT
203.831.9983