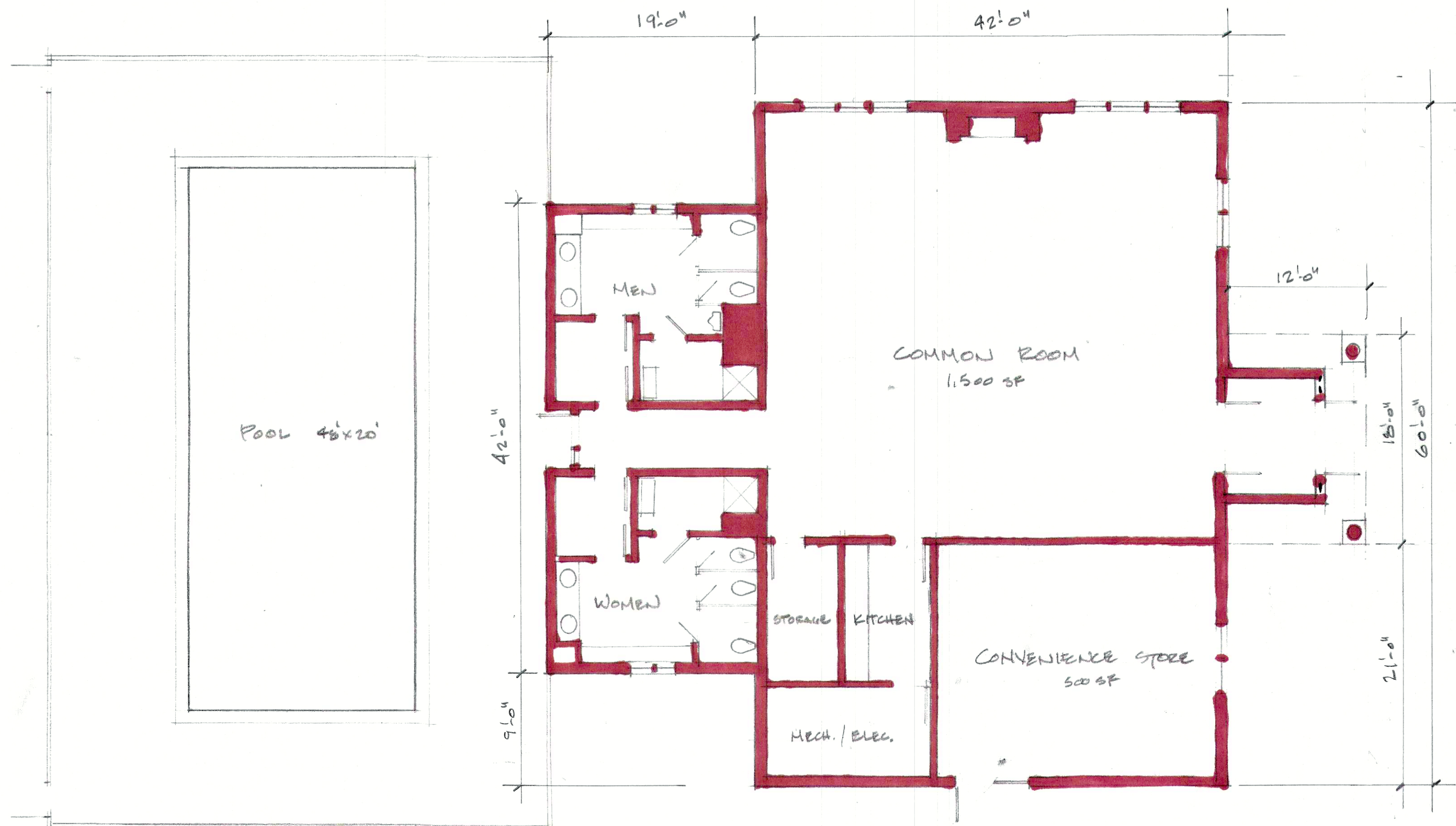


RECEIVED FOR FILING
East Haven
DATE 1/27/2023 TIME 01:34 PM
TOWN CLERK'S OFFICE
EAST HAVEN, CONN
Lisa Balter
TOWN CLERK



FLOOR PLAN

1/8" = 1'-0"

CLUB HOUSE
THE BLUFFS
31 Sperry Lane
East Haven, CT

Stein | Troost architecture
One Morgan Avenue, Norwalk CT
203.831.998

1.18.23