



Schematic Set: Issued 01/24/23

MARINERS POINT APARTMENTS

71 SOUTH SHORE DRIVE
EAST HAVEN, CT

The Sullivan Architectural Group 155 N. Broad Street Milford, CT 06460			DRAWING ISSUED DATE:	
Sheet #	ARCHITECTURAL DRAWINGS:	REV. DATE:	Sh:	1/24/23
T-001	TITLE SHEET		•	
A-001	UNIT ANALYSIS		•	
A-100	FIRST FLOOR PLAN		•	
A-101	SECOND & THIRD FLOOR PLAN		•	
A-102	FOURTH FLOOR PLAN		•	
A-103	ROOF PLAN		•	
A-200	BUILDING ELEVATIONS		•	
A-201	BUILDING ELEVATIONS		•	
A-400	BUILDING SECTION		•	
A-430	3D PERSPECTIVES		•	
A-431	3D PERSPECTIVES		•	
TOTAL SHEETS			11	

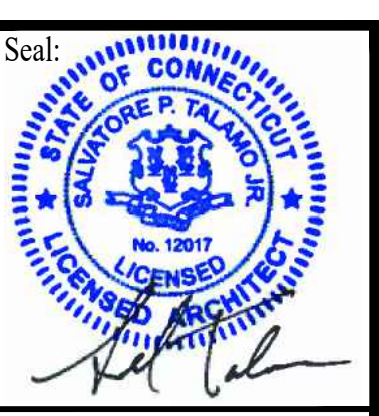
Revisions:

Drawing Title:
TITLE SHEET

Project:
MARINERS POINT
APARTMENTS
71 South Shore Drive
East Haven, CT

Consultant:

Architect:
The SULLIVAN Architectural Group
155 N. Broad Street, Milford, Connecticut 06460
ph: (203) 254-8680



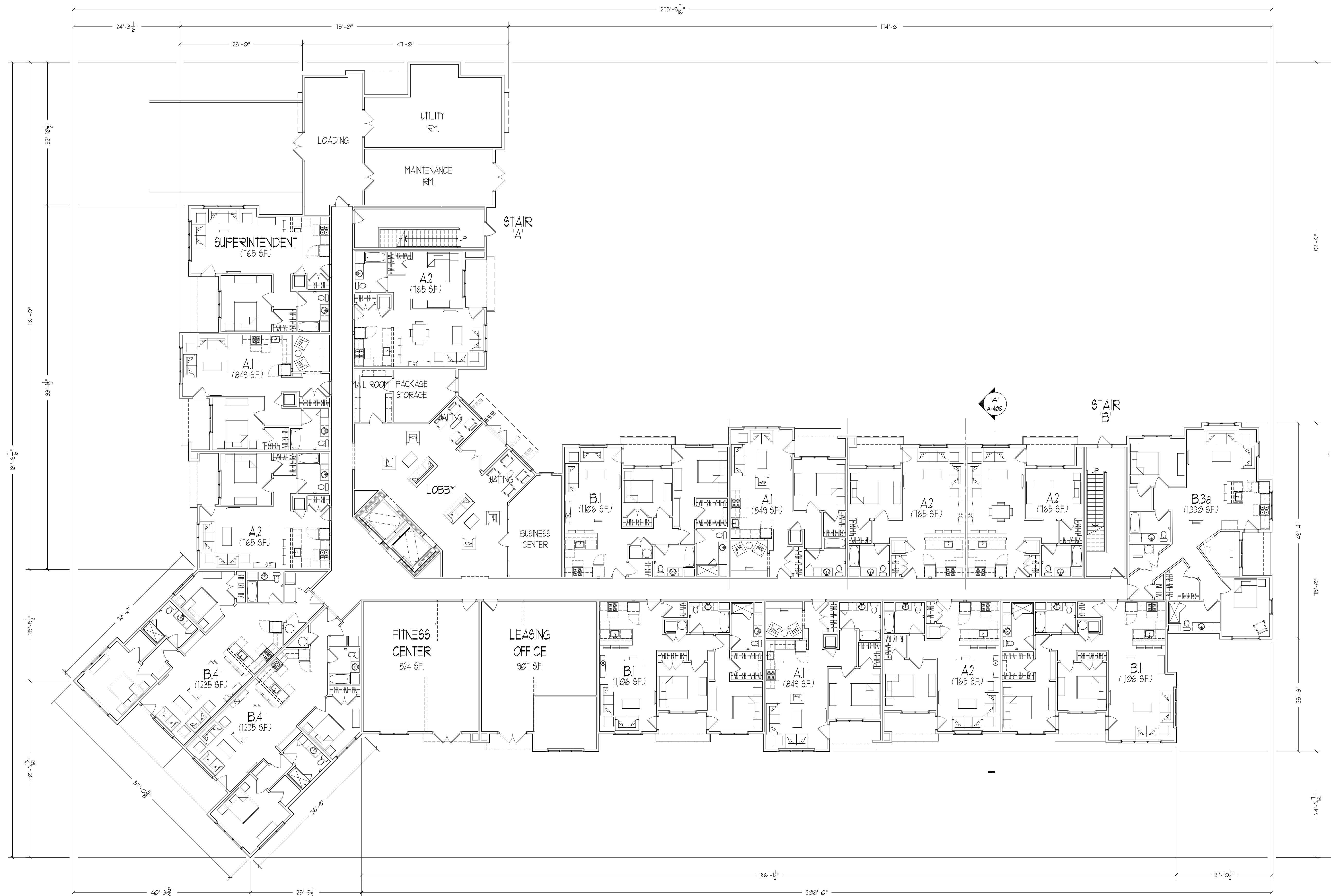
Date: 9/16/22

Project No. 2203

Drawn by: AK

Scale: AS NOTED

T-001



1 1ST FLOOR PLAN
SCALE: 3/32"=1'-0"

UNIT ANALYSIS			
	1 BDRM.	2 BDRM.	TOTAL
1ST FLR.	8	6	14
2ND FLR.	13	7	20
3RD FLR.	13	7	20
4TH FLR.	13	5	18
TOTAL:	47	25	72

Revisions:

Drawing Title:
FLOOR PLANS

Project:
MARINERS POINT APARTMENTS
71 South Shore Drive
East Haven, CT

Consultant:

The SULLIVAN Architectural Group
155 N. Broad Street, Milford, Connecticut 06460
ph: (203) 254-8680

Seal:



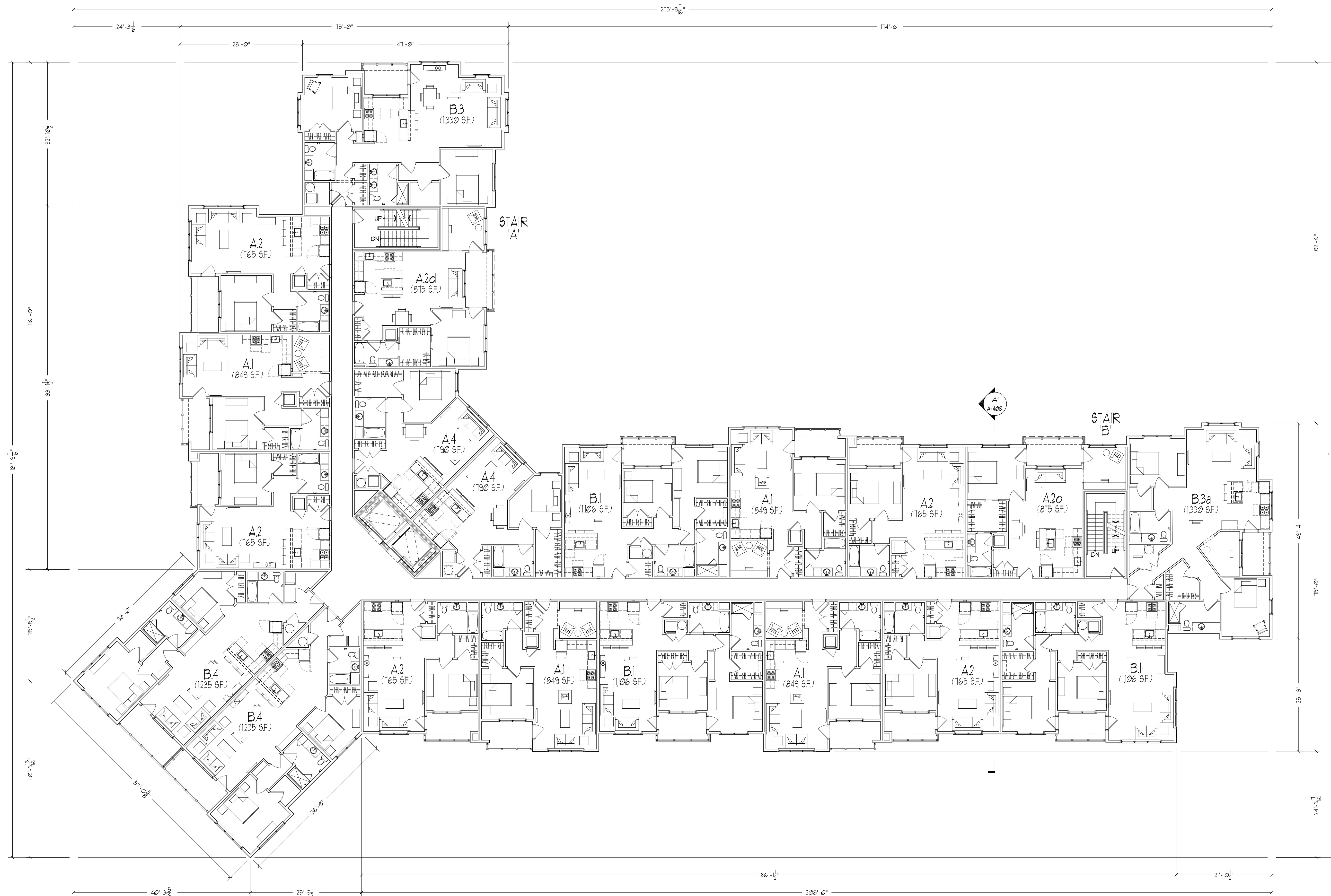
Date: 9/16/22

Project No. 2204

Drawn by: SPT

Scale: 3/32"=1'-0"

A-100



1 2ND & 3RD FLOOR PLANS
SCALE: 3/32"=1'-0" N

UNIT ANALYSIS			
	1 BDRM.	2 BDRM.	TOTAL
1ST FLR.	8	6	14
2ND FLR.	13	7	20
3RD FLR.	13	7	20
4TH FLR.	13	5	18
TOTAL:	47	25	72

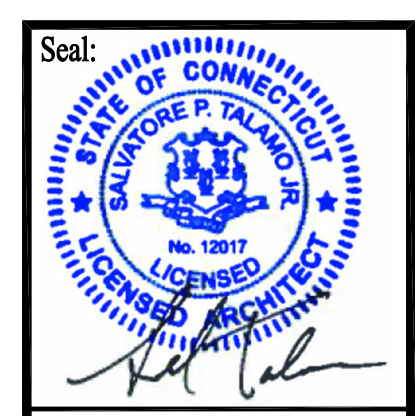
Revisions:

Drawing Title:
FLOOR PLANS

Project:
MARINERS POINT APARTMENTS
71 South Shore Drive
East Haven, CT

Consultant:

Architect:
The SULLIVAN Architectural Group
155 N. Broad Street, Milford, Connecticut 06460
ph: (203) 254-8680



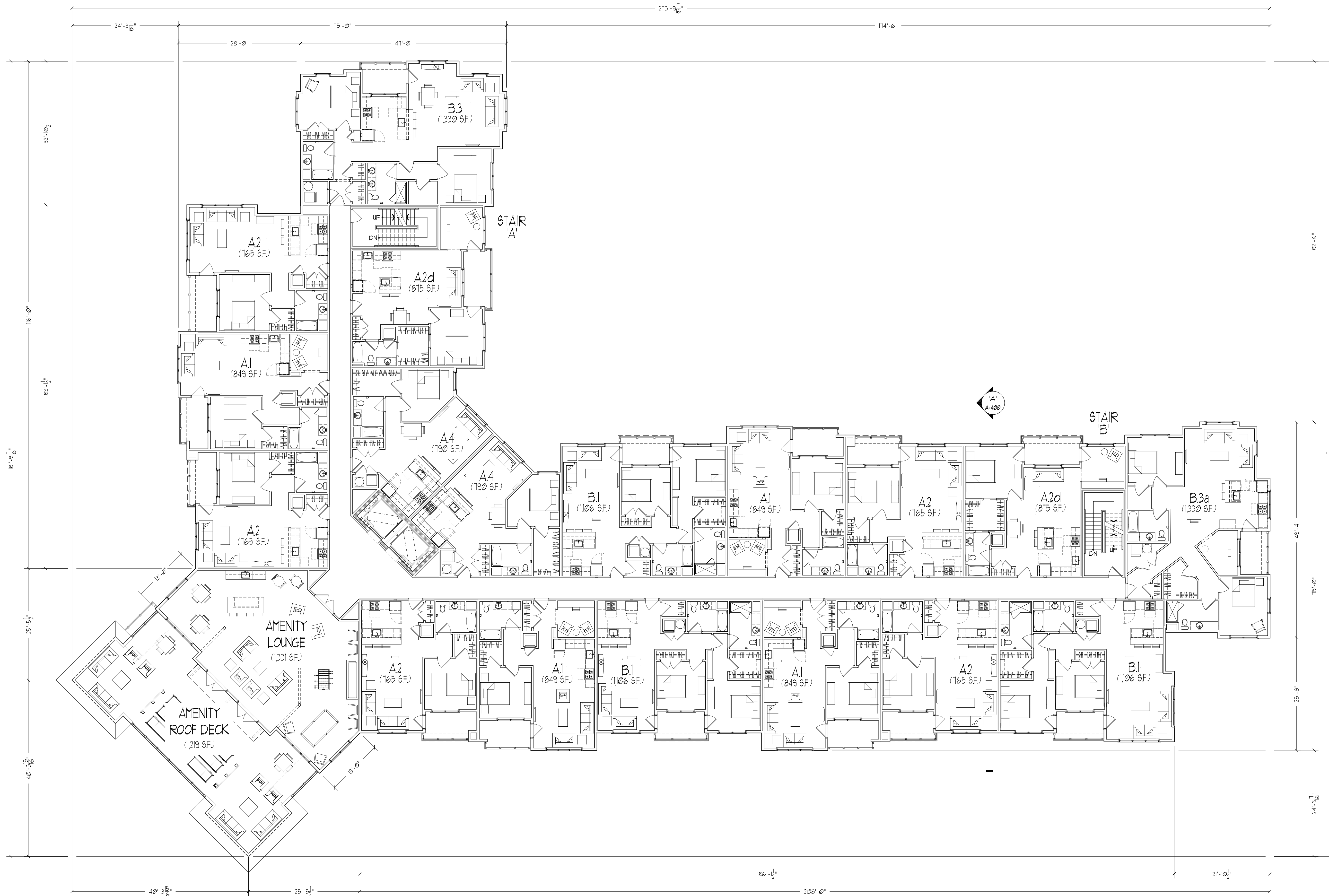
Date: 9/16/22

Project No. 2204

Drawn by: SPT

Scale: 3/32"=1'-0"

A-101



1 4TH FLOOR PLAN
SCALE: 3/32"=1'-0"

UNIT ANALYSIS			
	1 BDRM.	2 BDRM.	TOTAL
1ST FLR.	8	6	14
2ND FLR.	13	7	20
3RD FLR.	13	7	20
4TH FLR.	13	5	18
TOTAL:	47	25	72

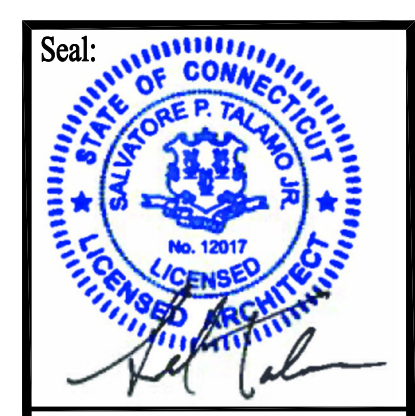
Revisions:

Drawing Title:
FLOOR PLANS

Project:
MARINERS POINT APARTMENTS
71 South Shore Drive
East Haven, CT

Consultant:

Architect:
The SULLIVAN Architectural Group
155 N. Broad Street, Milford, Connecticut 06460
ph: (203) 254-8680



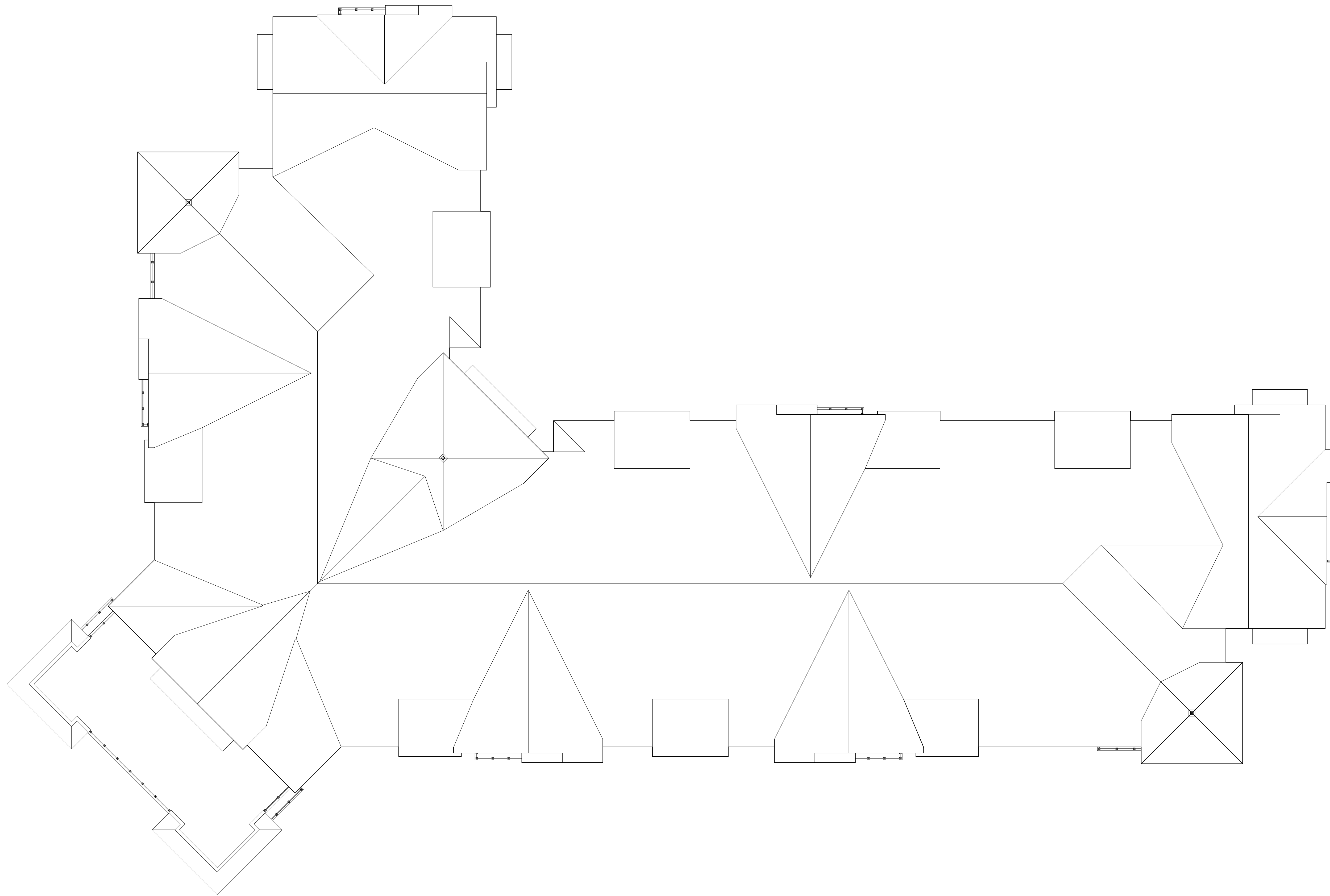
Date: 9/16/22

Project No. 2204

Drawn by: SPT

Scale: 3/32"=1'-0"

A-102



1 ROOF PLAN
 SCALE: 3/32"=1'-0" 

Revisions:

Drawing Title:
ROOF PLAN

Project:
**MARINERS POINT
 APARTMENTS**
 71 South Shore Drive
 East Haven, CT

Consultant:

Architect:
**The SULLIVAN
 Architectural Group**
 155 N. Broad Street, Milford, Connecticut 06460
 ph: (203) 254-8680

Seal:



Date: 9/16/22

Project No. 2204

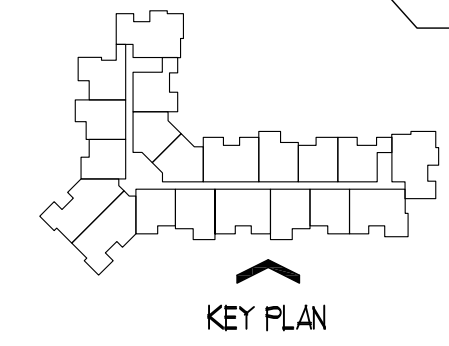
Drawn by: SPT

Scale: 3/32"=1'-0"

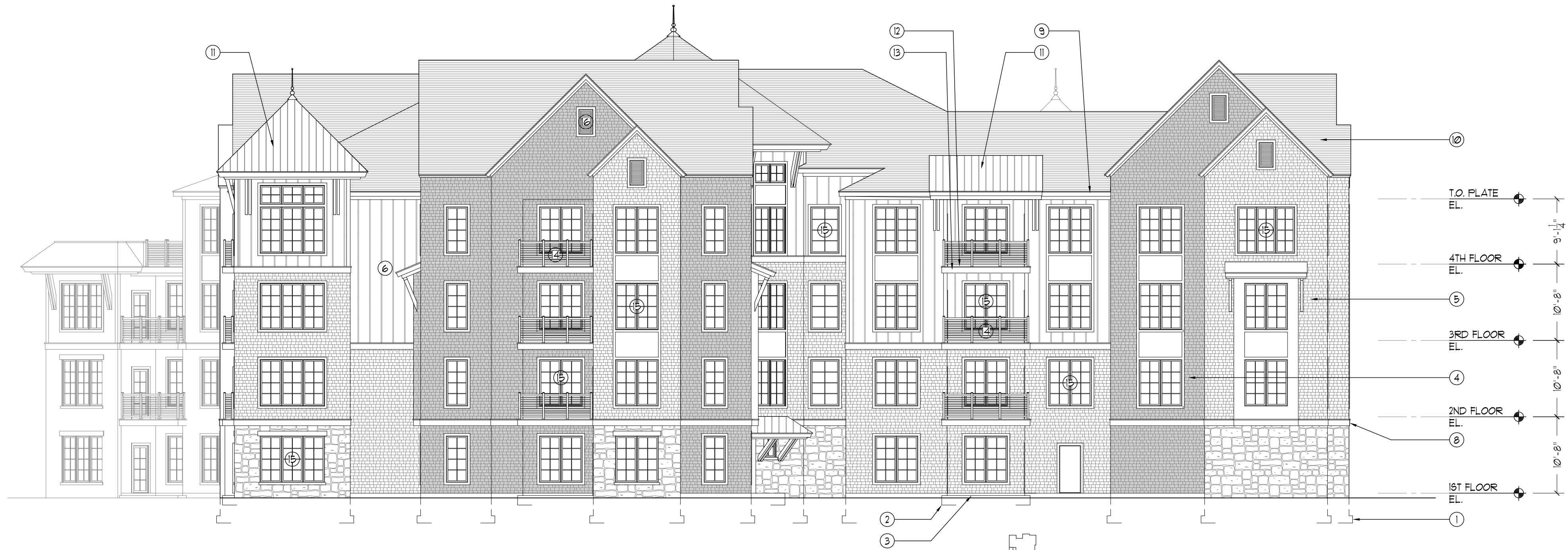
A-103



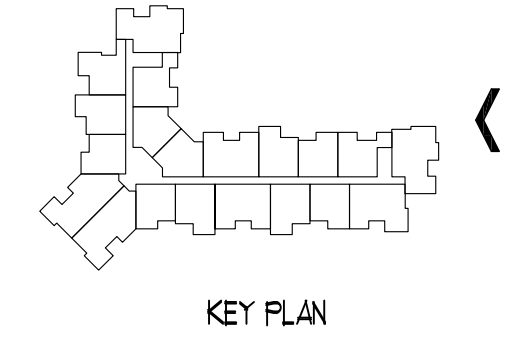
1 SOUTH-EAST ELEVATION
SCALE: 3/32"=1'-0"



- BUILDING ELEVATION TYPICAL NOTES:**
- ① -CONCRETE FDN WALL & FOOTING
 - ② -TURNED DOWN CONCRETE WALLS
 - ③ -CONCRETE SLAB PITCHED @ 1/4" / FT. TOWARD EXTERIOR
 - ④ -DARK VINYL SHINGLE SIDING
 - ⑤ -LIGHT VINYL SHINGLE SIDING
 - ⑥ -VINYL 16" BOARD & BATTEN SIDING
 - ⑦ -STONE SIDING
 - ⑧ -1X10 BAND BOARD (PVC)
 - ⑨ -1X8 FASCIA BOARD (PVC) W/ DRIP EDGE
 - ⑩ -ASPHALT ROOF SHINGLES
 - ⑪ -STANDING BEAM ROOF
 - ⑫ -2X6 T&G P.T. BALCONY DECKING
 - ⑬ -1X10 BALCONY FASCIA TRIM
 - ⑭ -ANODIZED ALUMINUM RAILING
 - ⑮ -INSULATED VINYL WINDOWS
 - ⑯ -ATTIC METAL LOUVER VENT W/ SCREEN



2 NORTH-EAST ELEVATION
SCALE: 3/32"=1'-0"



Revisions:

Drawing Title:
BUILDING ELEVATIONS

Project:
MARINERS POINT APARTMENTS
71 South Shore Drive
East Haven, CT

Consultant:

Architect:
The SULLIVAN Architectural Group
155 N. Broad Street, Milford, Connecticut 06460
ph: (203) 254-8680



Date: 9/16/22

Project No. 2204

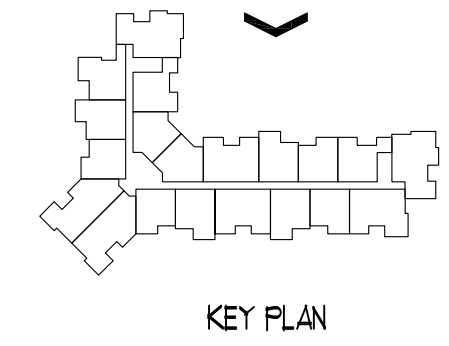
Drawn by: SPT

Scale: 3/32"=1'-0"

A-200



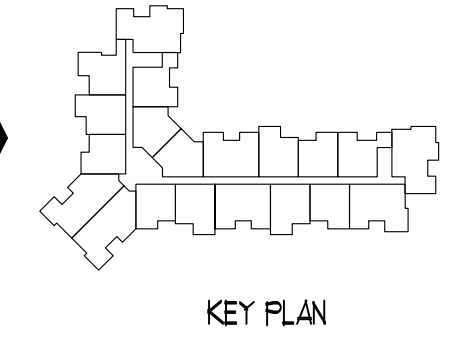
3 NORTH-WEST ELEVATION
SCALE: 3/32"=1'-0"



- BUILDING ELEVATION TYPICAL NOTES:**
- ① -CONCRETE FDN WALL & FOOTING
 - ② -TURNED DOWN CONCRETE WALLS
 - ③ -CONCRETE SLAB PITCHED @ 1/4" / FT. TOWARD EXTERIOR
 - ④ -DARK VINYL SHINGLE SIDING
 - ⑤ -LIGHT VINYL SHINGLE SIDING
 - ⑥ -VINYL 16" BOARD & BATTEN SIDING
 - ⑦ -STONE SIDING
 - ⑧ -1X10 BAND BOARD (PVC)
 - ⑨ -1X8 FASCIA BOARD (PVC) W/ DRIP EDGE
 - ⑩ -ASPHALT ROOF SHINGLES
 - ⑪ -STANDING BEAM ROOF
 - ⑫ -2X6 T&G P.T. BALCONY DECKING
 - ⑬ -1X10 BALCONY FASCIA TRIM
 - ⑭ -ANODIZED ALUMINUM RAILING
 - ⑮ -INSULATED VINYL WINDOWS
 - ⑯ -ATTIC METAL LOUVER VENT W/ SCREEN



1 SOUTH-WEST ELEVATION
SCALE: 3/32"=1'-0"



Revisions:

Drawing Title:
BUILDING ELEVATIONS

Project:
MARINERS POINT APARTMENTS
71 South Shore Drive
East Haven, CT

Consultant:

Architect:
The SULLIVAN Architectural Group
155 N. Broad Street, Milford, Connecticut 06460
ph: (203) 254-8680

Seal:



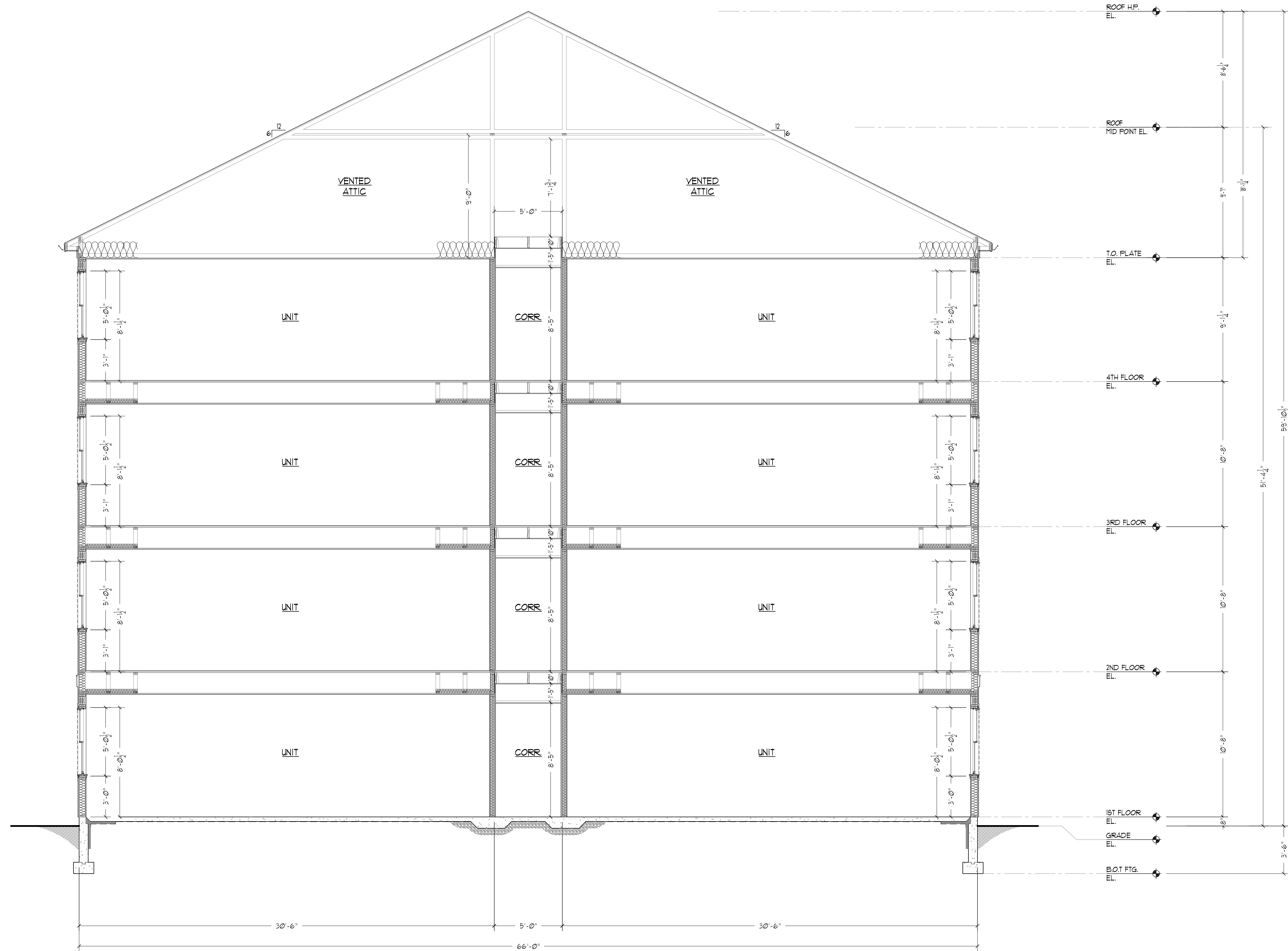
Date: 9/16/22

Project No. 2204

Drawn by: SPT

Scale: 3/32"=1'-0"

A-201



A
BUILDING SECTION
 SCALE: 1/4"=1'-0"

Revisions:

Drawing Title:
BUILDING SECTION

Project:
**MARINERS POINT
APARTMENTS**
71 South Shore Drive
East Haven, CT

Consultant:

Architect:
**The SULLIVAN
Architectural Group**
155 N. Broad Street, Milford, Connecticut 06460
ph: (203) 254-8680



Date: 9/16/22

Project No. 2204

Drawn by: SPT

Scale: 1/4"=1'-0"

A-400



FRONT PERSPECTIVE SKETCH



REAR PERSPECTIVE SKETCH

Revisions:

Drawing Title:
3D PERSPECTIVES

Project:
**MARINERS POINT
APARTMENTS**
71 South Shore Drive
East Haven, CT

Consultant:

Architect:
**The SULLIVAN
Architectural Group**
155 N. Broad Street, Milford, Connecticut 06460
ph: (203) 254-8680

Seal:



Date: 9/16/22

Project No. 2204

Drawn by: AK

Scale: N.T.S.

A-430



REAR AERIAL SKETCH



FRONT AERIAL SKETCH

Revisions:

Drawing Title:
3D PERSPECTIVES

Project:
**MARINERS POINT
APARTMENTS**
71 South Shore Drive
East Haven, CT

Consultant:

Architect:
**The SULLIVAN
Architectural Group**
155 N. Broad Street, Milford, Connecticut 06460
ph: (203) 254-8680

Seal:



Date: 9/16/22

Project No. 2204

Drawn by: AK

Scale: N.T.S.

A-431