

NOTES:

- This map is not valid unless embossed by the seal of the signatory.
- Sequence of construction activities are as follows:
 - Placement of silt fence (bags) and hay bales to be installed 48 hours prior to planting of trees and shrubs (see detail sheet attached).
 - Notify town engineer for inspection of said silt, fence and hay bales.
 - Planting of trees and shrubs shall be done in accordance with State of Connecticut Department of Transportation Standard Specification for Roads, Bridges and Incidental Construction" Form 8100, P. 2019. All plants shall be established between the dates in said manual.
 - Maintain all sod areas and erosion control measures throughout construction activities and until all grounds and surrounding areas are stabilized.
 - The person responsible for monitoring this construction activity is Kevin P. White P.E. 203-804-6337.
- Non planting, construction, months November-March each year monitor and observe Farm River Bank and 50' upland review area for any erosion/scour due to high volume flows. Establish stabilization measures i.e. silt fence, hay bales, and if necessary, Rip-Rap Protection as needed. Monitor said areas after construction activity in 2021 for 12 additional months.

References:

- Replacement of Bridge No. 04881 Maple Street over Farm River" Sheet No. 21 by Lucis Consultant Engineers plotted 09/02/2008.
- Town of East Haven, Geographic Information System (GIS), 2013 RWA Aerial Photography
- Town of East Haven, Assessor Map #470, Block 5731, Parcel 005

Scale: HORIZONTAL SCALE IN FEET 0 20 40

Tree Planting with Mulch Saucer
NOT TO SCALE

PROJECT TITLE: Site Plan
Prepared For: 1309 N. High St

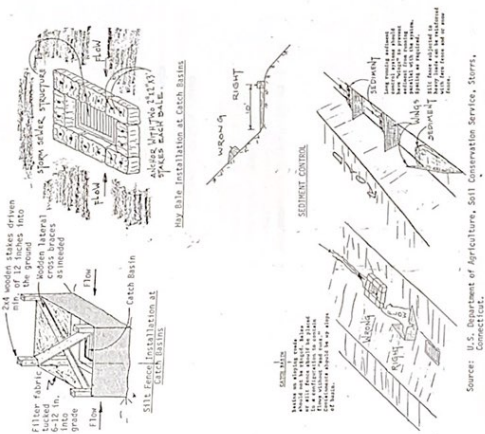
DRAWING TITLE: EAST HAVEN
PROJECT NO.: 043-123
DATE CHECKED: 1/23/21
DATE CHECKED: 1/23/21
DATE CHECKED: 1/23/21

WHITE ENGINEERING
Consulting Engineers - Civil
1000 Main Street, East Haven, CT 06424
Tel: 203-426-1122, Fax: 203-426-1123
www.white-engineering.com

WE

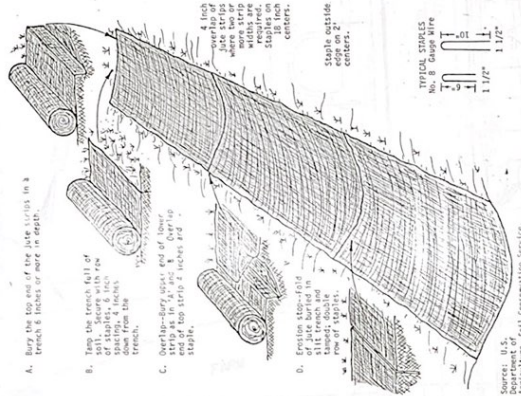
DATE CHECKED: 1/23/21
DATE CHECKED: 1/23/21
DATE CHECKED: 1/23/21

Figure 7-8 - Catch Basins



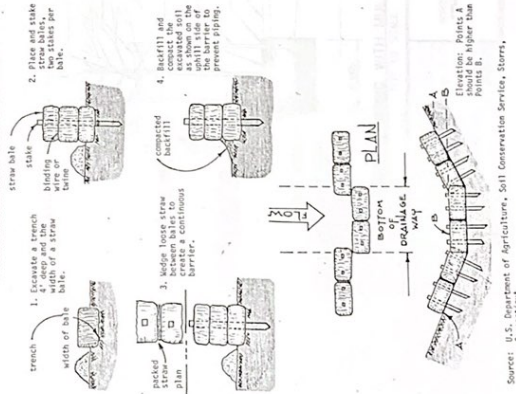
Sources: U.S. Department of Agriculture, Soil Conservation Service, Storms, Connecticut.

Detail for Installation of Jute Matting



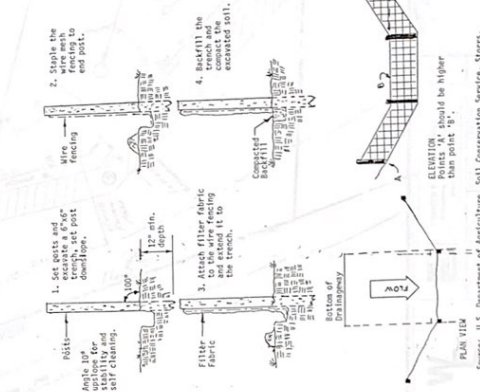
Sources: U.S. Department of Agriculture, Soil Conservation Service, Storms, Connecticut.

Placement and Construction of a Straw Bale Barrier



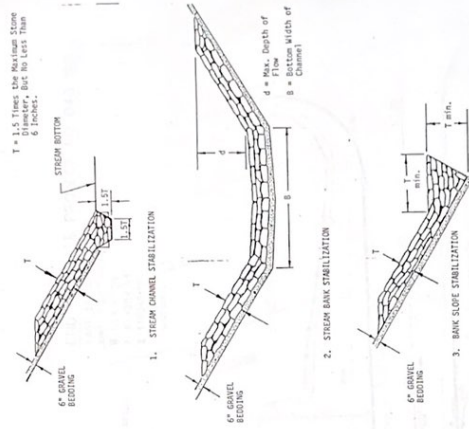
Sources: U.S. Department of Agriculture, Soil Conservation Service, Storms, Connecticut.

Placement and Construction of a Synthetic Filter Barrier



Sources: U.S. Department of Agriculture, Soil Conservation Service, Storms, Connecticut.

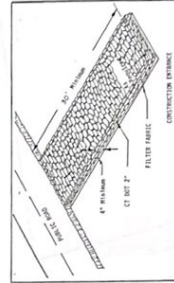
Typical Cross Sections



Sources: U.S. Department of Agriculture, Soil Conservation Service, Storms, Connecticut.

NOTES

1) DETAILS TAKEN FROM "GUIDELINES FOR SOIL CONSERVATION AND EROSION CONTROL" PUBLISHED BY THE U.S. DEPARTMENT OF AGRICULTURE, SOIL CONSERVATION SERVICE, STORMS, CONNECTICUT.



ANTI-TRACKING PAD (N.T.S.)

STANDARD DETAILS FOR

SOIL EROSION & SEDIMENT CONTROL
1309 N. HIGH ST.

TOWN OF STAMFORD
STATE OF CONNECTICUT
White Engineering
REGISTERED PROFESSIONAL ENGINEER
No. 14726
JRS CRS 20-04

DATE: 11/17/74
SCALE: AS SHOWN
DRAWN BY: JRS
CHECKED BY: CRS
DESIGNATION: PLAN
PROJECT NO.: 20-04