

GENERAL REQUIREMENTS

GENERAL THE TERM CONTRACTOR SHALL MEAN ELECTRICAL CONTRACTOR. AFTER CAREFULLY STUDYING THE DRAWINGS AND SPECIFICATIONS, AND BEFORE SUBMITTING THE PROPOSAL, EACH BIDDER SHALL VISIT THE SITE TO ASCERTAIN CONDITIONS OF THE SITE, AND THE NATURE AND EXACT QUANTITY OF WORK TO BE PERFORMED. NO EXTRA WILL BE ALLOWED IF THE CONTRACTOR FAILS TO NOTIFY THE ENGINEER/OWNER IN WRITING OF ANY DISCREPANCIES THAT HE MAY HAVE NOTED BETWEEN THE EXISTING CONDITIONS AND DRAWINGS AND SPECIFICATIONS.

THE CONTRACTOR SHALL VERIFY ALL MEASUREMENTS OF HIS OWN OR OTHERS AT THE SITE, AND SHALL BE RESPONSIBLE FOR CORRECTNESS OF SAME AS RELATED TO HIS WORK.

THE CONTRACTOR SHALL BE COMPLETELY RESPONSIBLE FOR ALL COORDINATION OF ANY ITEMS REGARDING UTILITY COMPANIES. ALL COSTS ASSOCIATED WITH UTILITY COMPANIES SHALL BE INCLUDED IN CONTRACTOR'S BASE BID AND SHALL BE CONSIDERED A PART OF THIS PROJECT.

CODES, REGULATIONS AND STANDARDS
ALL WORK SHALL COMPLY WITH THE REQUIREMENTS OF THE CODES LISTED IN THE ELECTRICAL SPECIFICATIONS.

GENERAL CONSTRUCTION NOTES

- PERSONNEL SAFETY IS OF PRIME IMPORTANCE. NO HAZARDOUS CONDITIONS SHALL BE ALLOWED. EVERY CARE SHALL BE TAKEN TO PROTECT CONSTRUCTION AND OTHER PERSONNEL. CLEANUP IS TO BE DONE ON A DAILY BASIS.
- THE ELECTRICAL CONTRACTOR SHALL INSTALL ALL EQUIPMENT IN ACCORDANCE WITH MANUFACTURERS INSTRUCTION AND OR REQUIREMENTS FOR PROPER OPERATION AND MAINTENANCE.
- THE TERM "PROVIDE" SHALL MEAN TO FURNISH AND INSTALL IN COMPLETE WORKING ORDER.
- ALL THE WIRE SIZES ARE BASED ON COPPER THHN 75°C, ALUMINUM IS NOT TO BE USED.
- THIS JOB IS A RENOVATION PROJECT. BEFORE SUBMITTING THE BID, THE ELECTRICAL CONTRACTOR SHALL VISIT THE SITE AND BECOME THOROUGHLY FAMILIAR WITH ALL EXISTING CONDITIONS UNDER WHICH THE WORK AND WORK OF OTHER TRADES WILL BE INSTALLED. THIS CONTRACT INCLUDES ALL NECESSARY OFFSETS, TRANSITIONS, MODIFICATIONS AND RELOCATION OF EXISTING EQUIPMENT FOR INSTALLATION OF NEW ELECTRICAL EQUIPMENT AND NEW EQUIPMENT OF OTHER TRADES. LIGHTING FIXTURES, DEVICES, CONDUIT, WIRING, ETC.). ALL NEW AND EXISTING EQUIPMENT AND SYSTEMS SHALL BE FULLY OPERATIONAL UNDER THIS CONTRACT BEFORE THE JOB IS CONSIDERED COMPLETE. THE ELECTRICAL CONTRACTOR SHALL BE HELD RESPONSIBLE FOR ANY ASSUMPTIONS MADE, ANY OMISSIONS OR ERRORS MADE AS A RESULT OF THE ELECTRICAL CONTRACTOR'S FAILURE WITH HIS INSPECTION OF EXISTING CONDITIONS AND REVIEW OF ALL OTHER TRADE DOCUMENTS.

GENERAL NOTES

NOTE: CONTRACTOR SHALL MEAN ELECTRICAL CONTRACTOR

- ALL EQUIPMENT LOCATIONS ARE TO BE VERIFIED WITH CIVIL DRAWINGS DRAWINGS AND CONDITIONS IN THE FIELD.
- THE CONTRACTOR SHALL COORDINATE WITH OTHER TRADES AND CONSULT WITH MECHANICAL DRAWINGS FOR POWER REQUIREMENTS OF THOSE TRADES.
- THE WORK SHALL BE COORDINATED WITH ALL OTHER TRADES AND PROVIDE OTHERS WITH NECESSARY INFORMATION TO COMPLETE THIS INSTALLATION. DRAWINGS ARE TO BE USED IN CONJUNCTION WITH SPECIFICATIONS ISSUED FOR THIS INSTALLATION.
- ANY WORK INSTALLED CONTRARY TO, OR WITHOUT APPROVAL BY THE ENGINEER SHALL BE SUBJECT TO CHANGE AS DIRECTED BY THE ENGINEER AND NO EXTRA COMPENSATION WILL BE ALLOWED THE CONTRACTOR FOR MAKING THESE CHANGES.
- CONDUIT & CABLE RUNS ARE SHOWN DIAGRAMMATICALLY ONLY AND SHALL BE INSTALLED IN A MANNER TO PREVENT CONFLICTS WITH EQUIPMENT AND SITE CONDITIONS.
- THE WIRING DIAGRAMS, QUANTITY AND SIZE OF WIRES AND CONDUIT REPRESENTS A SUGGESTED ARRANGEMENT BASED UPON SELECTED STANDARD COMPONENTS OF ELECTRICAL EQUIPMENT. MODIFICATIONS APPROVED BY THE ENGINEER MAY BE MADE BY THE CONTRACTOR TO ACCOMMODATE EQUIPMENT ACTUALLY PURCHASED. THE BASIC SEQUENCE AND METHOD OF CONTROL SHALL BE MAINTAINED AS INDICATED ON THE DRAWINGS.
- EACH CIRCUIT SHALL HAVE ITS OWN NEUTRAL, SHARED NEUTRALS ARE NOT ALLOWED.
- ALL EXTERIOR PULLBOXES, JUNCTION BOXES, AND SWITCH BOXES SHALL BE NEMA 4.
- ALL JUNCTION BOXES INDICATED AND/OR REQUIRED SHALL BE SIZED TO ACCOMMODATE INCOMING AND OUTGOING FEEDERS.
- ALL BRANCH CIRCUIT WIRES & ALL FEEDERS SHALL BE PERMANENTLY TAGGED AT THE PANEL CONNECTIONS WITH "BRADY" MARKERS.

CODES REGULATIONS AND STANDARDS

ALL ELECTRICAL WORK SHALL BE PERFORMED IN ACCORDANCE WITH THE FOLLOWING APPROVED CODES:

A. 2018 CONNECTICUT STATE BUILDING CODE:
 1. 2017 NATIONAL ELECTRIC CODE, NFPA 70
 2. INTERNATIONAL BUILDING CODE 2015 (ICC)
 3. INTERNATIONAL MECHANICAL CODE 2015 (ICC)
 4. INTERNATIONAL PLUMBING CODE 2015 (ICC)
 5. INTERNATIONAL ENERGY CONSERVATION CODE 2015 (ICC)
 6. INTERNATIONAL EXISTING BUILDING CODE 2015 (ICC) (EXISTING BUILDINGS)
 7. INTERNATIONAL FIRE CODE 2015 (ICC)

B. LOCAL AUTHORITIES HAVING JURISDICTION (A.H.)
 C. O.S.H.A. REGULATIONS
 D. 2010 AMERICANS WITH DISABILITIES ACT, ADA REQUIREMENTS (FEDERAL LAW)

ELECTRICAL SCOPE OF WORK

THE WORK INCLUDES, BUT IS NOT LIMITED TO THE FOLLOWING:

- EXTERIOR LIGHTING ELECTRICAL DISTRIBUTION SYSTEM, INCLUDING BALANCING LOADS FOR A COMPLETE LIGHTING SYSTEM.
- EXTERIOR LIGHTING SYSTEM, INCLUDING POLES, PRECAST CONCRETE POLE BASES & ACCESSORIES AS REQUIRED FOR A COMPLETE SYSTEM.
- EXTERIOR LIGHTING POINT TO POINT LAYOUTS AND CALCULATION SUMMARIES AS REQUIRED.
- EXTERIOR CALL FOR AID 'BLUE LIGHT' STATION.
- SHOP DRAWING REVIEWS AND OPERATION MANUALS AS REQUIRED BY THE ELECTRICAL SPECIFICATIONS.

ELECTRICAL ABBREVIATIONS

SYMBOL	DESCRIPTION	SYMBOL	DESCRIPTION
A	AMPS	JB	JUNCTION BOX
AC	ABOVE COUNTER	KCMIL	THOUSAND CIRCULAR MILLS
AFF	ABOVE FINISHED FLOOR	KVA	KILOVOLT-AMPERE
AFG	ABOVE FINISHED GRADE	KW	KILOWATT
AL	ALUMINUM	LP	LIGHTING PANEL
AM	AMMETER	MCB	MAIN CIRCUIT BREAKER
ATC	AUTOMATIC TEMP. CONTROL	MCC	MOTOR CONTROL CENTER
ATS	AUTOMATIC TRANSFER SWITCH	MLO	MAIN LUGS ONLY
AWG	AMERICAN WIRE GAUGE	MTD	MOUNTED
C	CONDUIT	NIC	NOT IN CONTRACT
CAT.	CATALOG	NTS	NOT TO SCALE
CB	CIRCUIT BREAKER	NC	NORMALLY CLOSED
CATV	CABLE TELEVISION	NL	NEW LOCATION OF EXISTING
CCTV	CLOSED CIRCUIT TELEVISION	NO	NORMALLY OPEN
CKT	CIRCUIT	NR	NEW TO REPLACE EXISTING
CLG	CEILING	P	POLE
CU	COPPER	PNL	PANEL
DP	DISTRIBUTION PANEL	PH, Ø	PHASE
D.S.	DISCONNECT SWITCH	PP	POWER PANEL
CONTR.	CONTRACTOR	RE	REMOVE EXISTING
EF	EXHAUST FAN	RL	RELOCATE EXISTING
EM	EMERGENCY	RR	REMOVE AND REPLACE
EW	ELECTRIC WATER COOLER	RGS	RIGID GALVANIZED STEEL
EX	EXISTING	TEL	TELEPHONE
GFCI	GROUND FAULT CKT. INTERR.	TYP	TYPICAL
GND	GROUND	U.G.	UNDERGROUND
HOA	HAND-OFF-AUTOMATIC	V	VOLTS
HP	HORSE POWER	W	WATTS
HZ	HERTZ	WP	WEATHER PROOF
IG	ISOLATED GROUND	XFMR	TRANSFORMER

PROJECT RESPONSIBILITY SCHEDULE

TASK	RESPONSIBLE GROUP				
	UNITED ILLUMINATING CO.		ELECTRICAL CONTRACTOR		CIVIL/ELECT. ENGINEER
	PROVIDE	INSTALLS	PROVIDE	INSTALLS	PROVIDE
PREPARE PRINTS & SCHEDULE	X				X
TRENCH / BACKFILL (PER U.I. STANDARD #21005)			X	X	
INSTALLATION OF CONCRETE BASES	X			X	
2" PVC CONDUIT TO CONC. BASE			X	X	
1/4" NYLON PULL LINE			X	X	
2" RIGID GALV. STEEL CONDUIT RISERS ON UTIL. CO. POLES		X	X(A)		
STANDOFFS, THREADLESS WEATHERHEAD, "U" BOLTS AND LAGS		X	X		
DELIVER CONCRETE BASES TO SITE	X				
CONDUCTORS TO FIXTURES	X	X			
CALL FOR AID POLE & POLE CAP			X	X	
CALL FOR AID STATION EQUIPMENT			X	X	
CALL FOR AID ELECTRICAL/TELEPHONE CONDUITS			X	X	
LUMINAIRES, POLES & BANNER ARMS	X			X	
AS-BUILT DRAWINGS			X		
INSPECT WORK	X				X

(A) CONDUIT / INSTALLATION IS A COST ITEM TO CONTRACTOR.
 (B) CONTRACTOR SHALL VERIFY RESPONSIBILITY CHART WITH U.I. PRIOR TO BID AND CARRY ANY CHARGES AND OR CHARGES FROM U.I. AS PART OF HIS BID.

LIGHTING AND SWITCHES	
SYMBOL	DESCRIPTION
☼	NEW POLE-MOUNTED LUMINAIRE
☼	EXISTING POLE-MOUNTED LUMINAIRE
☼	CALL FOR AID BOX (BLUE LIGHT)
○	UTILITY POLE

SYMBOLS SHOWN ARE FOR REFERENCE ONLY AND DO NOT CONSTITUTE A CHECK LIST OF DEVICES REQUIRED BY THE CONTRACTOR

- NOTES:**
 1. FOR COMPLETE DESCRIPTION OF FIXTURES, SEE EQUIPMENT SCHEDULE ON DRAWING E2.

ELECTRICAL DRAWING LIST


DWG. NO.	REV.	DRAWING TITLE
E1	-	GENERAL NOTES, SYMBOL LEGENDS, ABBREVIATIONS, SPECIFICATIONS, & DRAWING LIST
E2	-	EQUIPMENT SCHEDULE, NOTES AND LIGHT POLE DETAILS
E3	-	ROADWAY LIGHTING PLAN - 525 MAIN STREET - 556 MAIN STREET
E4	-	ROADWAY LIGHTING PLAN - 569 MAIN STREET - 614 MAIN STREET
E5	-	ROADWAY LIGHTING PLAN - 616 MAIN STREET - 651 MAIN STREET
E6	-	ROADWAY LIGHTING PLAN - 655 MAIN STREET - 678 MAIN STREET
E7	-	UTILITY COMPANY STANDARDS, DETAILS AND NOTES
E8	-	LUMINAIRE, LIGHT POLE, & CALL FOR AID STATION CUT-SHEETS

LOCATION AND ELEVATION OF UNDERGROUND UTILITIES UNLESS OTHERWISE NOTED IS UNKNOWN AND SHOULD BE FIELD VERIFIED BY CONTRACTOR PRIOR TO CONSTRUCTION

ANY USE OR REUSE OF ORIGINAL OR ALTERED CAD DESIGN MATERIALS BY THE CLIENT, CONTRACTOR OR OTHER PARTIES WITHOUT THE REVIEW AND WRITTEN APPROVAL OF AN AUTHORIZED REPRESENTATIVE OF NAFIS & YOUNG ENGINEERS, INC. SHALL BE AT THE SOLE RISK OF CLIENT, CONTRACTOR, OR OTHER PARTY AGREEING TO DEFEND, INDEMNIFY, AND HOLD NAFIS & YOUNG ENGINEERS, INC. HARMLESS FROM ALL CLAIMS, INJURIES, DAMAGES, LOSSES, EXPENSES AND ATTORNEY'S FEES ARISING OUT OF THE MODIFICATION OR REUSE OF THESE MATERIALS.

MUSCO ENGINEERING ASSOCIATES

1 REV 1 PJE
 11/1/2022
 CORRECTIONS
 AS SHOWN


Consulting Engineers:

 MUSCO ENGINEERING ASSOCIATES
 375 Morgan Lane, Unit 307
 West Haven, CT 06516
 (203) 932-1901 FAX (203) 931-1550
 www.muscoengineering.com

The information contained herein is the proprietary and confidential property of Musco Engineering Associates. Reproductions, publication, distribution or application in whole or in part requires the written permission of the above parties.
 © Copyright 2020. All Rights Reserved.

GENERAL NOTES, SYMBOL LEGENDS, ABBREVIATIONS, SPECIFICATIONS & DRAWING LIST
MAIN STREET AREA
EAST HAVEN, CONNECTICUT
PHASE V

PREPARED FOR:
 TOWN OF EAST HAVEN

NOVEMBER 11, 2020



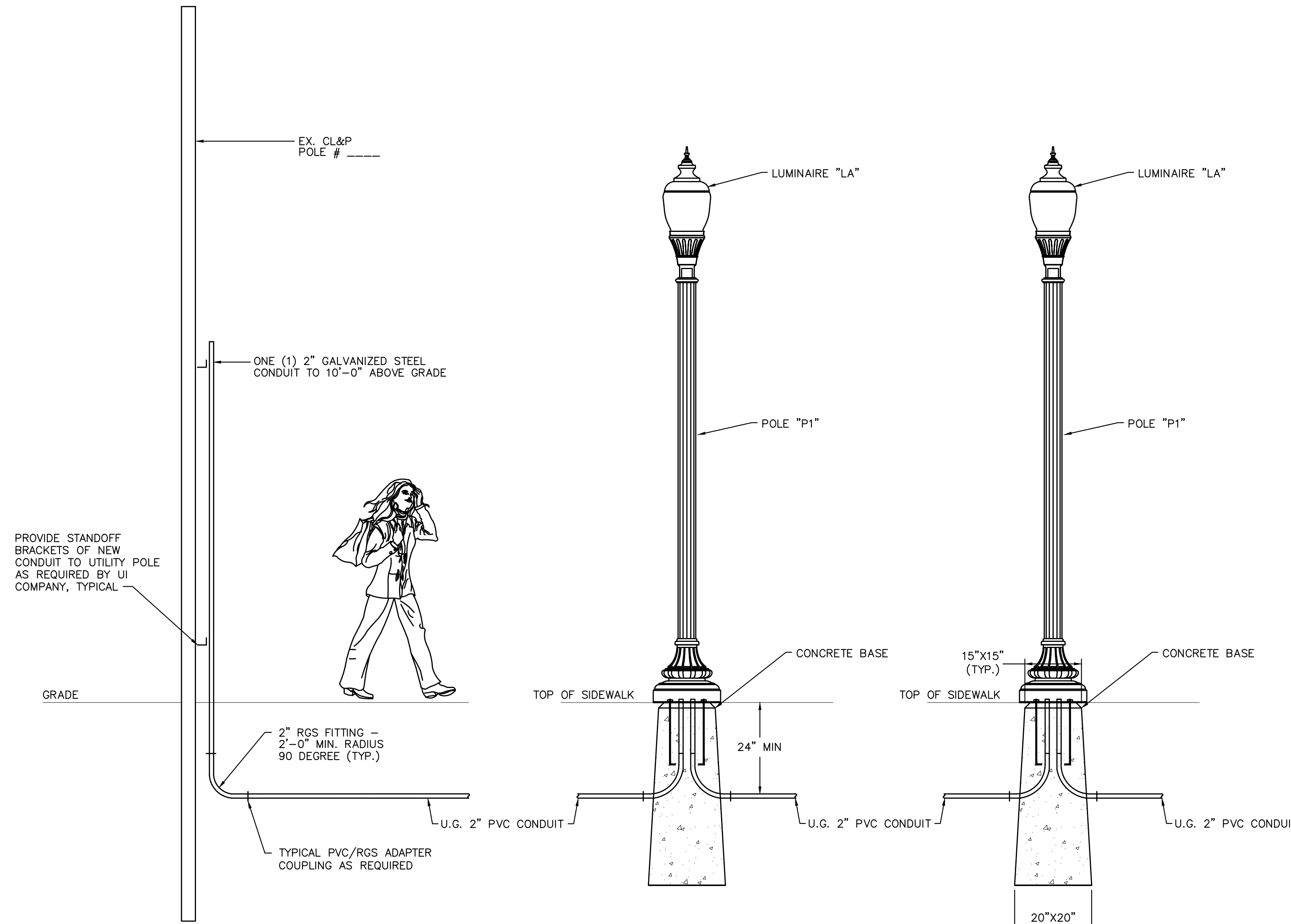
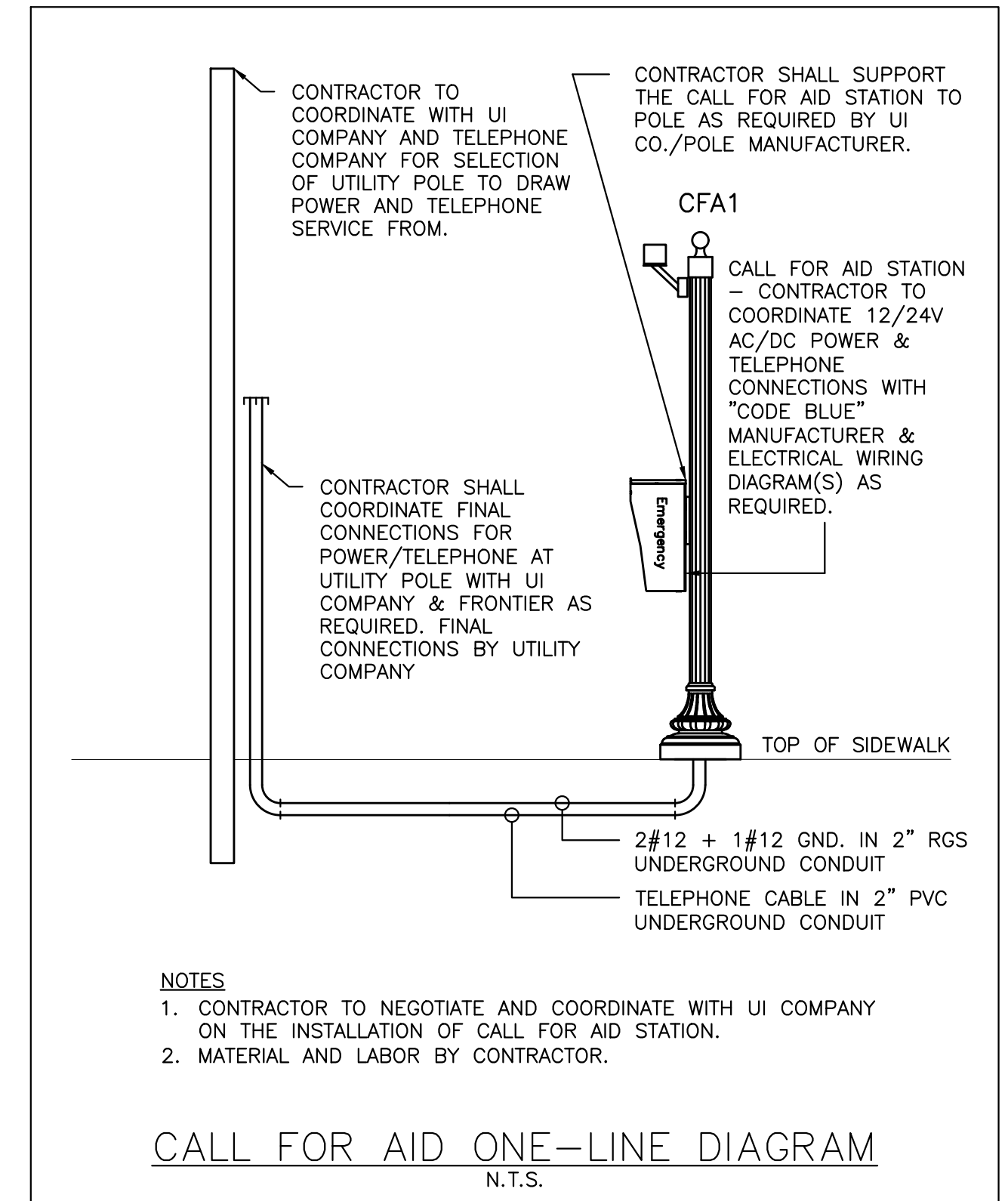
NAFIS & YOUNG ENGINEERS, INC.
 1355 Middletown Avenue
 Northford, Connecticut 06472
 Phone: (203) 484-2793
 Fax: (203) 484-7343
 Email: ryeng@nafisandyoung.com

JOB NO. 14-066 SHEET NO. E1

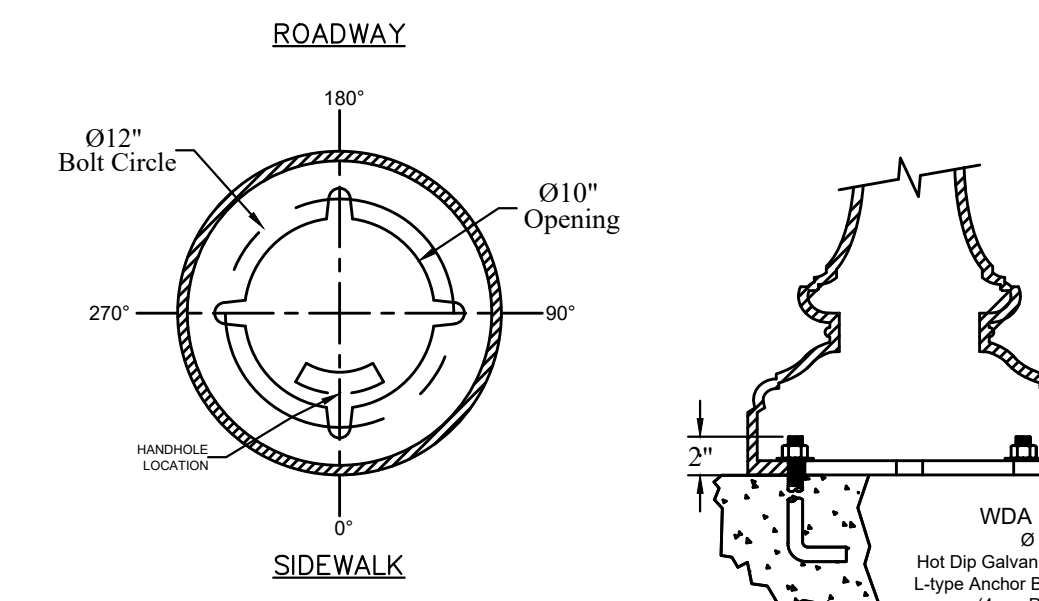
EQUIPMENT SCHEDULE (BY UI COMPANY) - TYPE LA									
TYPE	TYPE	MANUFACTURER	EST. WATTS	CATALOG NUMBER	QTY.	LAMP TYPE	VOLTS	MOUNTING	REMARKS
LIGHT	LA	COOPER	40	ULA-A4-U-SYM-VM8-4N7-GN	33	080-LED	120	CONCRETE BASE	LED POLE-MTD. LUMINAIRE, ACORN TOP, HARTFORD GREEN
POLE	P1	HOLOPHANE	-	WDA-12-FTJ-17-P07-LAB-RAL6009-30% GLOSS RFD234543	33	-	-	CONCRETE BASE	HOLOPHANE FLUTED 12' ALUMINUM POLE, HARTFORD GREEN

EQUIPMENT SCHEDULE (BY CONTRACTOR) - TYPE CFA1									
TYPE	TYPE	MANUFACTURER	EST. WATTS	CATALOG NUMBER	QTY.	LAMP TYPE	VOLTS	MOUNTING	REMARKS
POLE	P2	HOLOPHANE	-	WDA-08-FTJ-17-P07-ABG-RAL6009-30% GLOSS R138A	3	-	-	CONCRETE BASE	HOLOPHANE FLUTED 8' ALUMINUM POLE, HARTFORD GREEN, WITH MOUNTED "CALL FOR AID" BLUE-LIGHT BOX
CAP	C	HOLOPHANE	-	BF	3	-	-	TENON	CAST ALUMINUM FINIAL MOUNTED ON 3" O.D. X 3" TALL TENON
CALL BOX	B1	CODE BLUE	-	CB 4-U SIGNATURE CALL BOX	3	-	-	POLE	EMERGENCY CALL BOX, GLOSS BLACK FINISH, "EMERGENCY" TEXT
BEACON	B2	CODE BLUE	-	S-1000 LED BEACON/STROBE	3	LED	12/24V AC/DC	POLE	LED BEACON/STROBE, POLE MOUNT, STAINLESS STEEL

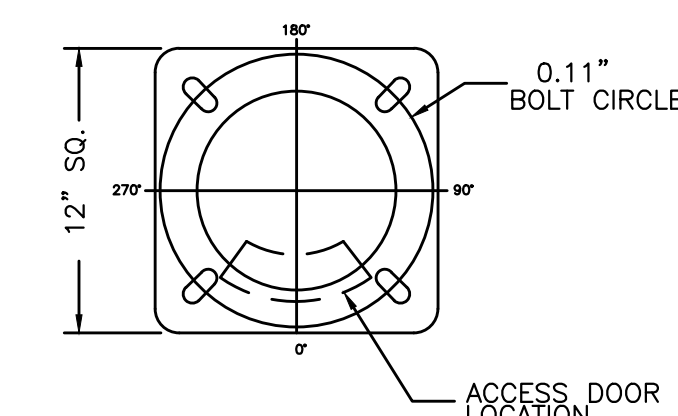
- NOTES**
- CONDUIT SHALL BE A MINIMUM 24" FROM TOP OF PIPE TO GRADE.
 - CONDUIT INSIDE BASES IS RGS. PROVIDE PVC/RGS ADAPTER COUPLING TO CONNECT DIFFERENT TYPES OF CONDUIT.
 - TYPE "LA" FIXTURE AND TYPE "P1" POLE ARE TO BE ORDERED BY UI COMPANY. ALL OTHER EQUIPMENT FALLS UNDER THE RESPONSIBILITY OF THE CONTRACTOR.
 - UI COMPANY TO PROVIDE ALL CONCRETE BASES FOR LIGHT FIXTURES. ANY ADDITIONAL BASES AS REQUIRED FALL UNDER THE RESPONSIBILITY OF THE CONTRACTOR TO COORDINATE WITH UI COMPANY.
 - CONTRACTOR TO PROVIDE AND INSTALL ALL MATERIALS FOR CALL FOR AID STATION INCLUDING EQUIPMENT, POLE MATERIALS, AND THE CONCRETE BASE FROM UI COMPANY.



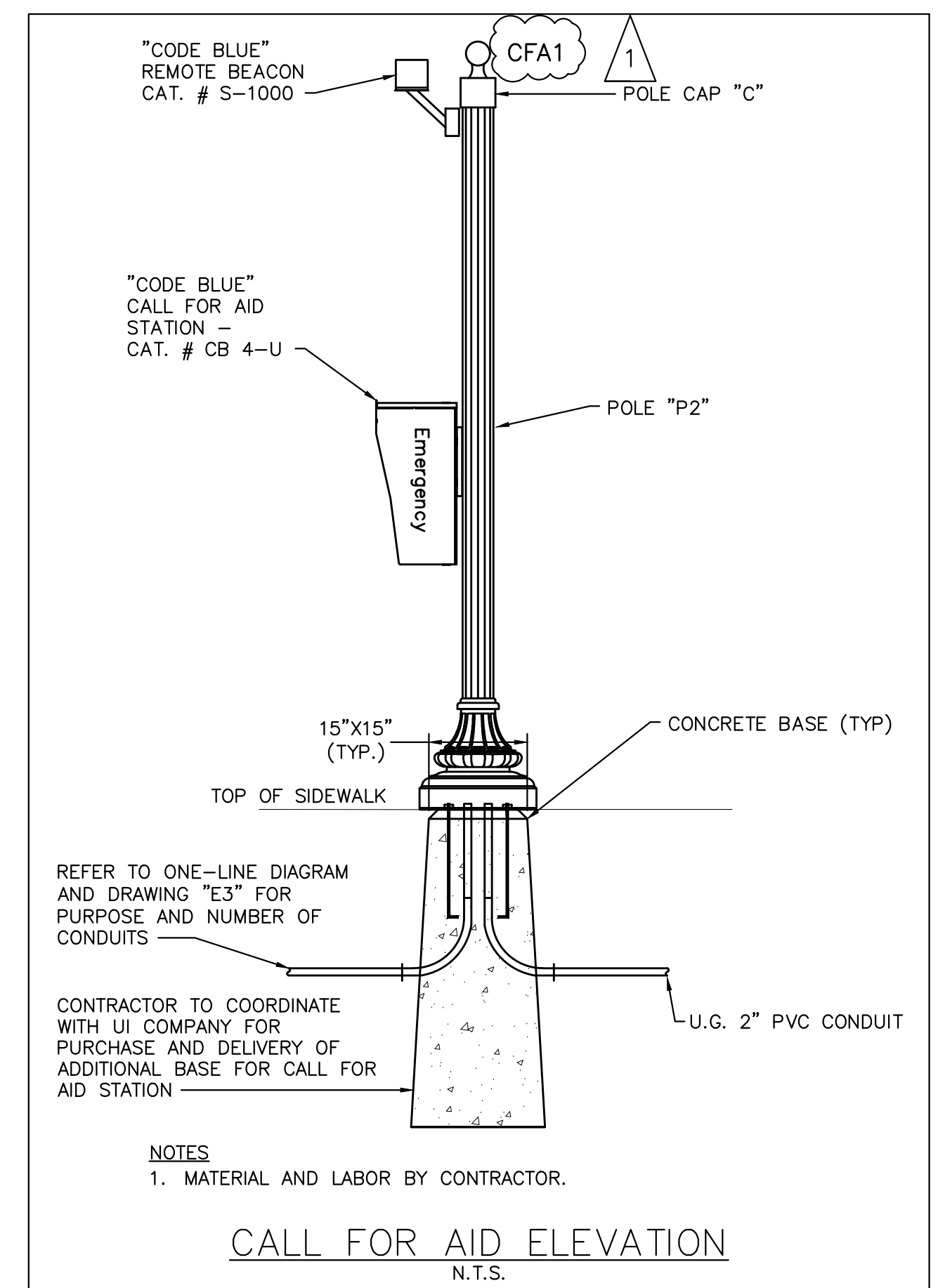
TYPICAL LIGHT POLE ELEVATION
N.T.S.



ANCHORAGE GUIDE
TYPE LA



ANCHORAGE GUIDE
TYPE LB



CALL FOR AID ELEVATION
N.T.S.

LOCATION AND ELEVATION OF UNDERGROUND UTILITIES UNLESS OTHERWISE NOTED IS UNKNOWN AND SHOULD BE FIELD VERIFIED BY CONTRACTOR PRIOR TO CONSTRUCTION

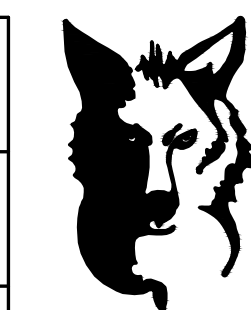
ANY USE OR REUSE OF ORIGINAL OR ALTERED CAD DESIGN MATERIALS BY THE CLIENT, CONTRACTOR OR OTHER PARTIES WITHOUT THE REVIEW AND WRITTEN APPROVAL OF AN AUTHORIZED REPRESENTATIVE OF NAFIS & YOUNG ENGINEERS, INC. SHALL BE AT THE SOLE RISK OF CLIENT, CONTRACTOR, OR OTHER PARTY AGREEING TO DEFEND, INDEMNIFY, AND HOLD NAFIS & YOUNG ENGINEERS, INC. HARMLESS FROM ALL CLAIMS, DAMAGES, LOSSES, EXPENSES AND ATTORNEY'S FEES ARISING OUT OF THE MODIFICATION OR REUSE OF THESE MATERIALS.

MEAT090834-1

REV 1 PJE
11/1/2022
CORRECTIONS
AS SHOWN

Consulting Engineers:
MEAC MUSCO ENGINEERING ASSOCIATES
375 Morgan Lane, Unit 307
West Haven, CT 06516
(203) 932-1901 FAX (203) 931-1550
www.muscoengineering.com
The information contained herein is the proprietary and confidential property of Musco Engineering Associates. Reproductions, publication, distribution or duplication in whole or in part requires the written permission of the above parties.
© Copyright 2020, All Rights Reserved.

**EQUIPMENT SCHEDULES,
NOTES & LIGHT POLE DETAILS**
**MAIN STREET AREA
EAST HAVEN, CONNECTICUT
PHASE V**
PREPARED FOR:
TOWN OF EAST HAVEN

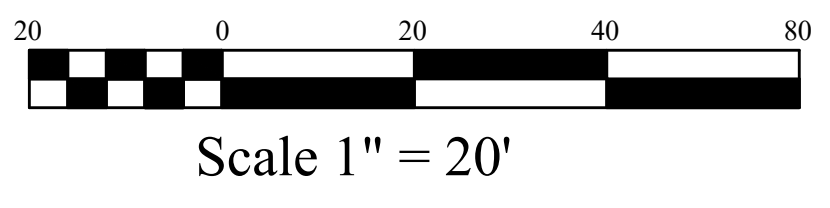
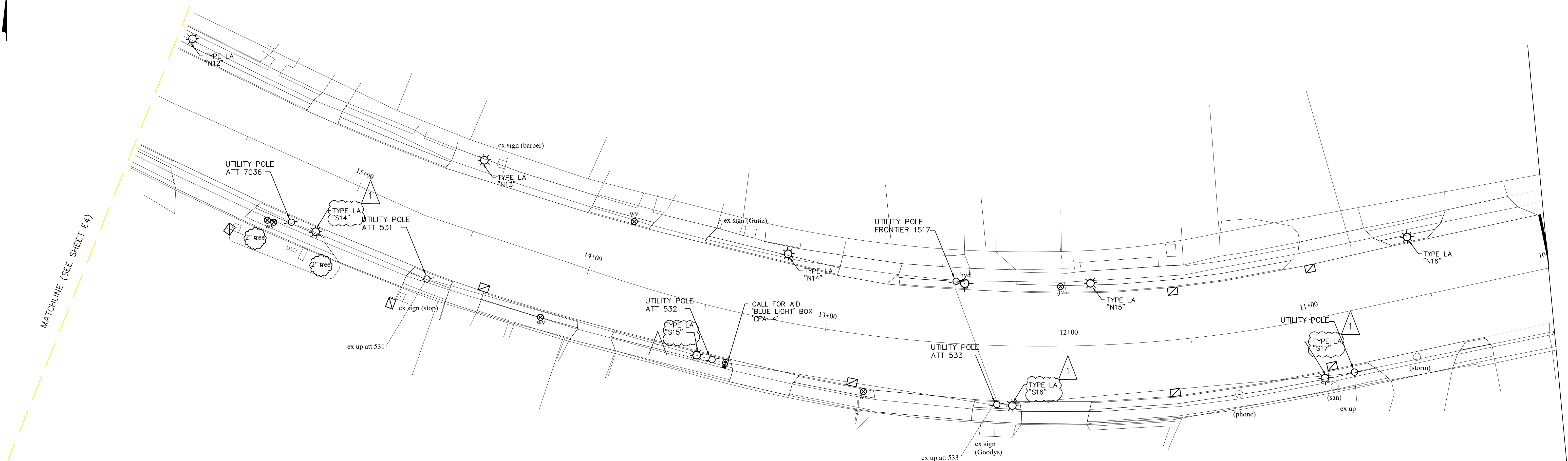


**NAFIS & YOUNG
ENGINEERS, INC.**
1355 Middletown Avenue
Northford, Connecticut 06472
Phone: (203) 484-2793
Fax: (203) 484-7343
Email: nyeng@nafisandyoung.com

NOVEMBER 11, 2020

JOB NO. 14-066

SHEET NO. E2



ROADWAY LIGHTING PLAN -
525 MAIN STREET - 556 MAIN STREET

- NOTES**
1. REFER TO CIVIL ENGINEER DRAWINGS FOR EXACT LOCATIONS OF NEW FIXTURES AND BASES.
 2. ALL UNDERGROUND CONDUIT SHALL BE A MINIMUM OF 2" PER UI STANDARDS. REFER TO ONE LINE DIAGRAMS ON DRAWING E2 & UI REFERENCE DRAWING ATTACHED TO THIS SET.
 3. REFER TO REFERENCE DRAWING BY UI #16107F-151S FOR WIRING SIZES TO BE USED.
 4. COORDINATE WITH UI COMPANY FOR EXACT ROUTING LOCATIONS OF CONDUIT & WIRING.
 5. FINAL UTILITY POLE(S) FOR ELECTRICAL AND TELEPHONE SERVICES TO BE DETERMINED BY UTILITY COMPANIES FOLLOWING NEGOTIATION BETWEEN UTILITY COMPANIES AND CONTRACTOR.

- UTILITIES**
- ELECTRIC**
UNITED ILLUMINATING
180 MARSH HILL ROAD
ORANGE, CT
1-800-257-0141
- CABLE TV**
COMCAST
904 CHAPEL STREET
NEW HAVEN, CT
1-800-266-2278
- TELEPHONE**
FRONTIER
325 MORSE STREET
HAMDEN, CT
1-203-495-8836
- WATER**
SOUTH. CT. REGIONAL WATER AUTHORITY
90 SARGENT DRIVE
NEW HAVEN, CT
1-203-654-3119
- GAS SERVICE**
THE SOUTHERN CONNECTICUT GAS CO.
60 MARSH HILL ROAD
ORANGE, CT
1-866-268-2887

**IMPORTANT! READ!
WARNING AND DISCLAIMER OF LIABILITY
UNDERGROUND UTILITIES**

The user of this document is WARNED NOT TO RELY on the purported accuracy, scale, dimension, measurement, descriptions, or elevations of any underground structure.

The underground structures depicted hereon are for informational purposes only. The Preparer of this document DISCLAIMS ANY LIABILITY whatsoever to the user. There are no warranties or representations, expressed or implied and any use other than for informational purposes is excessive, unintended and an impermissible misuse of this document.

Before Excavating Call Toll Free 1-800-922-4455 for Underground Utility Information. Please call 48 hours before service is required on jobsite.

LOCATION AND ELEVATION OF UNDERGROUND UTILITIES UNLESS OTHERWISE NOTED IS UNKNOWN AND SHOULD BE FIELD VERIFIED BY CONTRACTOR PRIOR TO CONSTRUCTION

ANY USE OR REUSE OF ORIGINAL OR ALTERED CAD DESIGN MATERIALS BY THE CLIENT, CONTRACTOR OR OTHER PARTIES WITHOUT THE REVIEW AND WRITTEN APPROVAL OF AN AUTHORIZED REPRESENTATIVE OF NAFIS & YOUNG ENGINEERS, INC. SHALL BE AT THE SOLE RISK OF CLIENT, CONTRACTOR, OR OTHER PARTY AGREED TO HEREIN. INDEMNIFY AND HOLD NAFIS & YOUNG ENGINEERS, INC. HARMLESS FROM ALL CLAIMS, INJURIES, DAMAGES, LOSSES, EXPENSES AND ATTORNEY'S FEES ARISING OUT OF THE MODIFICATION OR REUSE OF THESE MATERIALS.

1
REV 1 PJE
11/1/2022
CORRECTIONS
AS SHOWN

Consulting Engineers:
ME&A MUSCO ENGINEERING ASSOCIATES
375 Morgan Lane, Unit 307
West Haven, CT 06516
(203) 932-1901 FAX (203) 931-1550
www.muscoengineering.com

The information contained herein is the proprietary and confidential property of Musco Engineering Associates. Reproductions, publication, distribution or duplication in whole or in part requires the written permission of the above parties.
© Copyright 2020. All Rights Reserved.

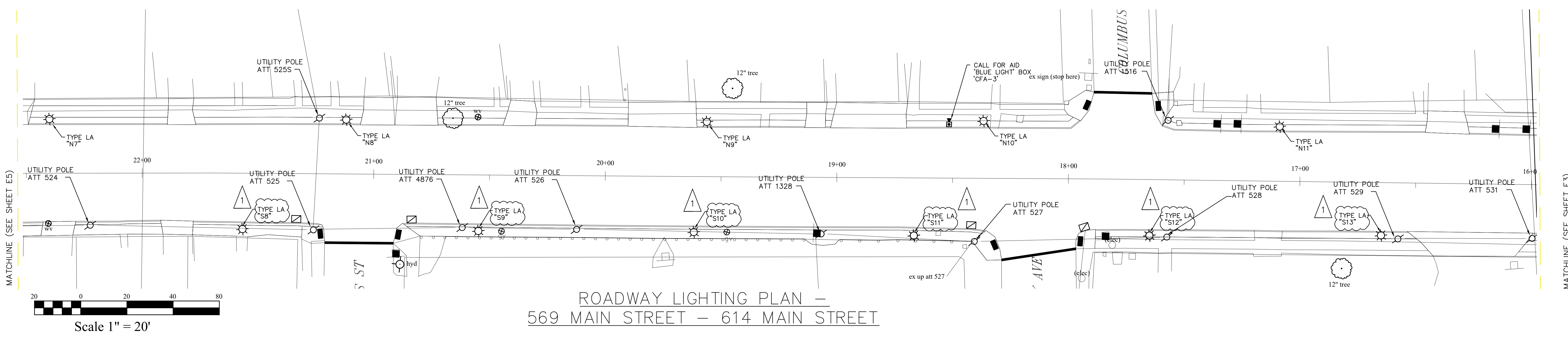
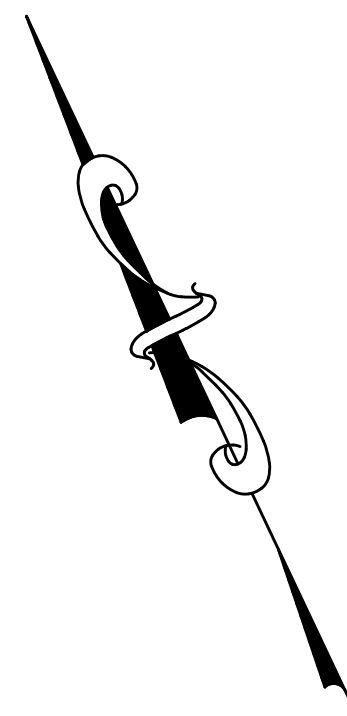
ROADWAY LIGHTING PLAN -

**MAIN STREET AREA
EAST HAVEN, CONNECTICUT
PHASE V**

PREPARED FOR:
TOWN OF EAST HAVEN

NAFIS & YOUNG ENGINEERS, INC.
1355 Middletown Avenue
Northford, Connecticut 06472
Phone: (203) 484-2793
Fax: (203) 484-7343
Email: nyeng@nafisandyoung.com

JOB NO. **SHEET NO.** E3



ROADWAY LIGHTING PLAN –
569 MAIN STREET – 614 MAIN STREET

- NOTES**
1. REFER TO CIVIL ENGINEER DRAWINGS FOR EXACT LOCATIONS OF NEW FIXTURES AND BASES.
 2. ALL UNDERGROUND CONDUIT SHALL BE A MINIMUM OF 2" PER UI STANDARDS. REFER TO ONE LINE DIAGRAMS ON DRAWING E2 & UI REFERENCE DRAWING ATTACHED TO THIS SET.
 3. REFER TO REFERENCE DRAWING BY UI #16107F-151S FOR WIRING SIZES TO BE USED.
 4. COORDINATE WITH UI COMPANY FOR EXACT ROUTING LOCATIONS OF CONDUIT & WIRING.
 5. FINAL UTILITY POLE(S) FOR ELECTRICAL AND TELEPHONE SERVICES TO BE DETERMINED BY UTILITY COMPANIES FOLLOWING NEGOTIATION BETWEEN UTILITY COMPANIES AND CONTRACTOR.

- UTILITIES**
- ELECTRIC**
UNITED ILLUMINATING
180 MARSH HILL ROAD
ORANGE, CT
1-800-257-0141
- CABLE TV**
COMCAST
904 CHAPEL STREET
NEW HAVEN, CT
1-800-266-2278
- TELEPHONE**
FRONTIER
325 MORSE STREET
HAMDEN, CT
1-203-495-8836
- WATER**
SOUTH. CT. REGIONAL WATER AUTHORITY
90 SARGENT DRIVE
NEW HAVEN, CT
1-203-654-3119
- GAS SERVICE**
THE SOUTHERN CONNECTICUT GAS CO.
60 MARSH HILL ROAD
ORANGE, CT
1-866-268-2887

**IMPORTANT! READ!
WARNING AND DISCLAIMER OF LIABILITY
UNDERGROUND UTILITIES**

The user of this document is WARNED NOT TO RELY on the purported accuracy, scale, dimension, measurement, descriptions, or elevations of any underground structure.

The underground structures depicted hereon are for informational purposes only. The Preparer of this document DISCLAIMS ANY LIABILITY whatsoever to the user. There are no warranties or representations, expressed or implied and any use other than for informational purposes is excessive, unintended and an impermissible misuse of this document.

Before Excavating Call Toll Free 1-800-922-4455 for Underground Utility Information. Please call 48 hours before service is required on jobsite.

LOCATION AND ELEVATION OF UNDERGROUND UTILITIES UNLESS OTHERWISE NOTED IS UNRELIABLE AND SHOULD BE FIELD VERIFIED BY CONTRACTOR PRIOR TO CONSTRUCTION

ANY USE OR REUSE OF ORIGINAL OR ALTERED CAD DESIGN MATERIALS BY THE CLIENT, CONTRACTOR OR OTHER PARTIES WITHOUT THE REVIEW AND WRITTEN APPROVAL OF AN AUTHORIZED REPRESENTATIVE OF NAFIS & YOUNG ENGINEERS, INC. SHALL BE AT THE SOLE RISK OF CLIENT, CONTRACTOR, OR OTHER PARTY AGREEING TO DEFEND, INDEMNIFY, AND HOLD NAFIS & YOUNG ENGINEERS, INC. HARMLESS FROM ALL CLAIMS, DAMAGES, LOSSES, EXPENSES AND ATTORNEY'S FEES ARISING OUT OF THE MODIFICATION OR REUSE OF THESE MATERIALS.

1 REV 1 PJE
11/1/2022
CORRECTIONS
AS SHOWN

Consulting Engineers:
MUSCO ENGINEERING ASSOCIATES
375 Morgan Lane, Unit 307
West Haven, CT 06516
(203) 932-1901 FAX (203) 931-1550
www.muscoengineering.com

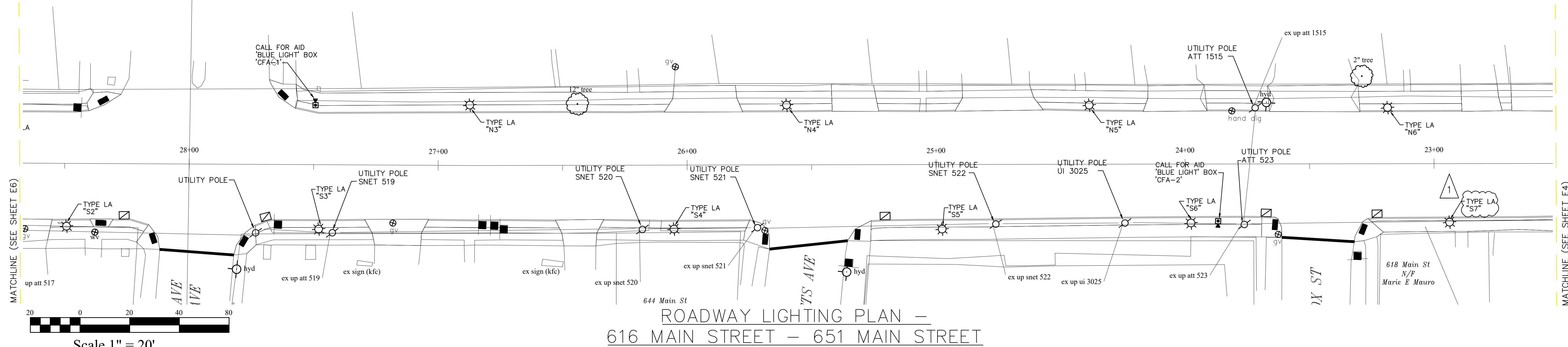
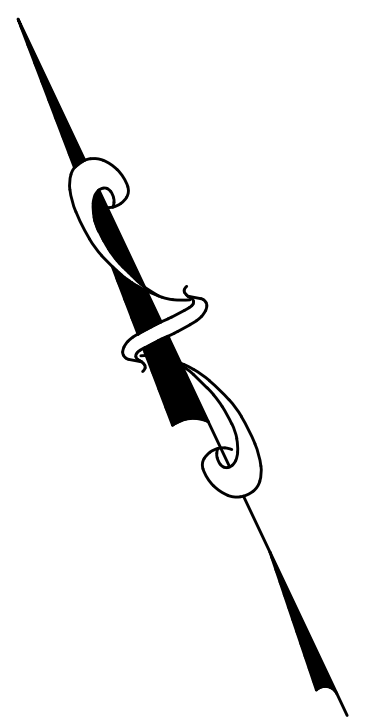
The information contained herein is the proprietary and confidential property of Musco Engineering Associates. Reproductions, publication, distribution or duplication in whole or in part requires the written permission of the above parties.
© Copyright 2020. All Rights Reserved.

ROADWAY LIGHTING PLAN -
MAIN STREET AREA
EAST HAVEN, CONNECTICUT
PHASE V

PREPARED FOR:
TOWN OF EAST HAVEN

NAFIS & YOUNG ENGINEERS, INC.
1355 Middletown Avenue
Northford, Connecticut 06472
Phone: (203) 484-2793
Fax: (203) 484-7343
Email: njyeng@nafisandyoung.com

JOB NO. SHEET NO. E4



ROADWAY LIGHTING PLAN –
616 MAIN STREET – 651 MAIN STREET

- NOTES**
1. REFER TO CIVIL ENGINEER DRAWINGS FOR EXACT LOCATIONS OF NEW FIXTURES AND BASES.
 2. ALL UNDERGROUND CONDUIT SHALL BE A MINIMUM OF 2" PER UI STANDARDS. REFER TO ONE LINE DIAGRAMS ON DRAWING E2 & UI REFERENCE DRAWING ATTACHED TO THIS SET.
 3. REFER TO REFERENCE DRAWING BY UI #16107F-1515 FOR WIRING SIZES TO BE USED.
 4. COORDINATE WITH UI COMPANY FOR EXACT ROUTING LOCATIONS OF CONDUIT & WIRING.
 5. FINAL UTILITY POLE(S) FOR ELECTRICAL AND TELEPHONE SERVICES TO BE DETERMINED BY UTILITY COMPANIES FOLLOWING NEGOTIATION BETWEEN UTILITY COMPANIES AND CONTRACTOR.

- UTILITIES**
- ELECTRIC**
UNITED ILLUMINATING
180 MARSH HILL ROAD
ORANGE, CT
1-800-257-0141
- CABLE TV**
COMCAST
904 CHAPEL STREET
NEW HAVEN, CT
1-800-266-2278
- TELEPHONE**
FRONTIER
325 MORSE STREET
HAMDEN, CT
1-203-495-8836
- WATER**
SOUTH. CT. REGIONAL WATER AUTHORITY
90 SARGENT DRIVE
NEW HAVEN, CT
1-203-654-3119
- GAS SERVICE**
THE SOUTHERN CONNECTICUT GAS CO.
60 MARSH HILL ROAD
ORANGE, CT
1-866-268-2887

**IMPORTANT! READ!
WARNING AND DISCLAIMER OF LIABILITY
UNDERGROUND UTILITIES**

The user of this document is WARNED NOT TO RELY on the purported accuracy, scale, dimension, measurement, descriptions, or elevations of any underground structure.

The underground structures depicted hereon are for informational purposes only. The Preparer of this document DISCLAIMS ANY LIABILITY whatsoever to the user. There are no warranties or representations, expressed or implied and any use other than for informational purposes is excessive, unintended and an impermissible misuse of this document.

Before Excavating Call Toll Free 1-800-922-4455 for Underground Utility Information. Please call 48 hours before service is required on jobsite.

LOCATION AND ELEVATION OF UNDERGROUND UTILITIES UNLESS OTHERWISE NOTED IS UNKNOWN AND SHOULD BE FIELD VERIFIED BY CONTRACTOR PRIOR TO CONSTRUCTION

ANY USE OR REUSE OF ORIGINAL OR ALTERED CAD DESIGN MATERIALS BY THE CLIENT, CONTRACTOR OR OTHER PARTIES WITHOUT THE REVIEW AND WRITTEN APPROVAL OF AN AUTHORIZED REPRESENTATIVE OF NAFIS & YOUNG ENGINEERS, INC. SHALL BE AT THE SOLE RISK OF CLIENT, CONTRACTOR, OR OTHER PARTY AGREEING TO DEFEND, INDEMNIFY, AND HOLD NAFIS & YOUNG ENGINEERS, INC. HARMLESS FROM ALL CLAIMS, INJURIES, DAMAGES, LOSSES, EXPENSES AND ATTORNEY'S FEES ARISING OUT OF THE MODIFICATION OR REUSE OF THESE MATERIALS.

1
REV 1 PJE
11/1/2022
CORRECTIONS
AS SHOWN

Consulting Engineers:
MUSCO ENGINEERING ASSOCIATES
375 Morgan Lane, Unit 307
West Haven, CT 06516
(203) 932-1901 FAX (203) 931-1550
www.muscoengineering.com

The information contained herein is the proprietary and confidential property of Musco Engineering Associates. Reproductions, publication, distribution or application in whole or in part requires the written permission of the above parties.
© Copyright 2020. All Rights Reserved.

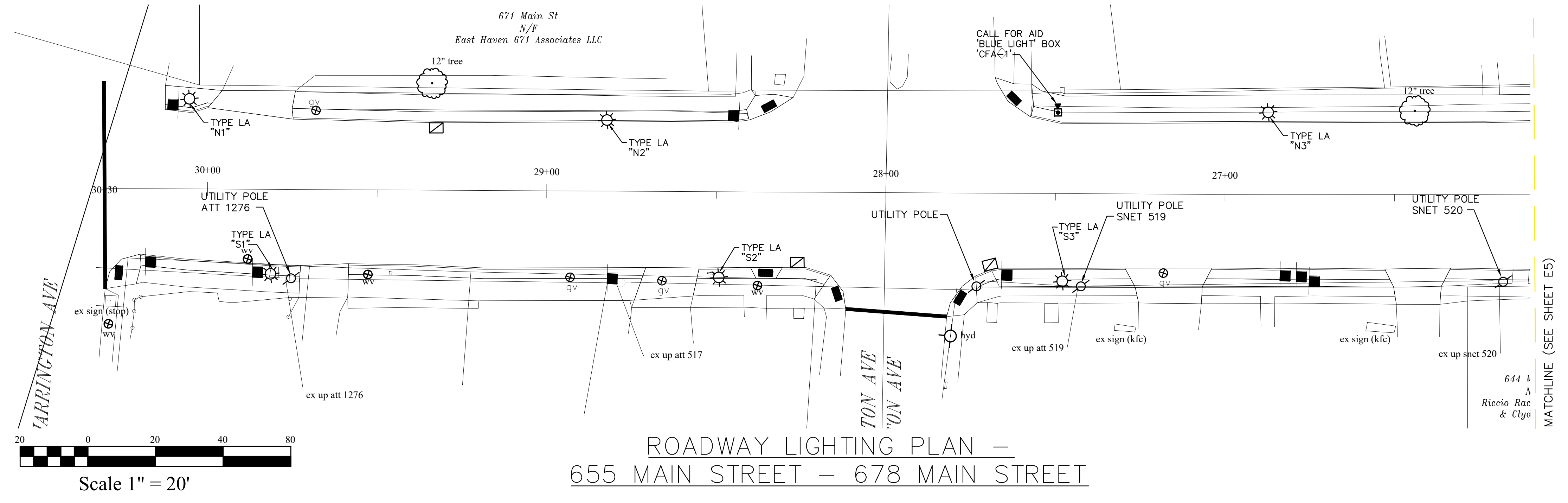
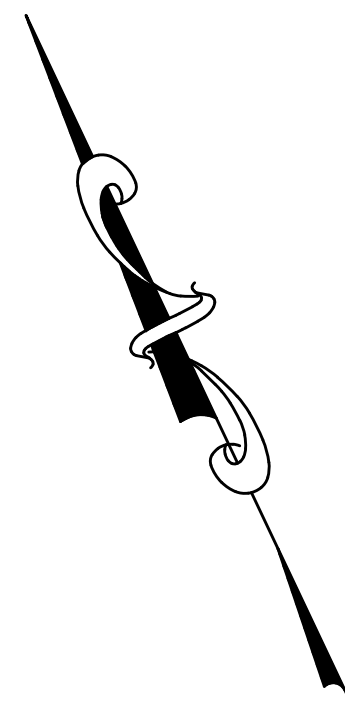
ROADWAY LIGHTING PLAN -

**MAIN STREET AREA
EAST HAVEN, CONNECTICUT
PHASE V**

PREPARED FOR:
TOWN OF EAST HAVEN

NAFIS & YOUNG ENGINEERS, INC.
1355 Middletown Avenue
Northford, Connecticut 06472
Phone: (203) 484-2793
Fax: (203) 484-7343
Email: nyeng@nafisandyoung.com

JOB NO. **SHEET NO. E5**



- NOTES**
- REFER TO CIVIL ENGINEER DRAWINGS FOR EXACT LOCATIONS OF NEW FIXTURES AND BASES.
 - ALL UNDERGROUND CONDUIT SHALL BE A MINIMUM OF 2" PER UI STANDARDS. REFER TO ONE LINE DIAGRAMS ON DRAWING E2 & UI REFERENCE DRAWING ATTACHED TO THIS SET.
 - REFER TO REFERENCE DRAWING BY UI #16107F-151S FOR WIRING SIZES TO BE USED.
 - COORDINATE WITH UI COMPANY FOR EXACT ROUTING LOCATIONS OF CONDUIT & WIRING.
 - FINAL UTILITY POLE(S) FOR ELECTRICAL AND TELEPHONE SERVICES TO BE DETERMINED BY UTILITY COMPANIES FOLLOWING NEGOTIATION BETWEEN UTILITY COMPANIES AND CONTRACTOR.

LOCATION AND ELEVATION OF UNDERGROUND UTILITIES UNLESS OTHERWISE NOTED IS UNKNOWN AND SHOULD BE FIELD VERIFIED BY CONTRACTOR PRIOR TO CONSTRUCTION

ANY USE OR REUSE OF ORIGINAL OR ALTERED CAD DESIGN MATERIALS BY THE CLIENT, CONTRACTOR OR OTHER PARTIES WITHOUT THE REVIEW AND WRITTEN APPROVAL OF AN AUTHORIZED REPRESENTATIVE OF NAFIS & YOUNG ENGINEERS, INC. SHALL BE AT THE SOLE RISK OF CLIENT, CONTRACTOR, OR OTHER PARTY AGREEING TO DEFEND, INDEMNIFY, AND HOLD NAFIS & YOUNG ENGINEERS, INC. HARMLESS FROM ALL CLAIMS, DAMAGES, LOSSES, EXPENSES AND ATTORNEY'S FEES ARISING OUT OF THE MODIFICATION OR REUSE OF THESE MATERIALS.

- UTILITIES**
- ELECTRIC**
UNITED ILLUMINATING
180 MARSH HILL ROAD
ORANGE, CT
1-800-257-0141
- CABLE TV**
COMCAST
904 CHAPEL STREET
NEW HAVEN, CT
1-800-266-2278
- TELEPHONE**
FRONTIER
325 MORSE STREET
HAMDEN, CT
1-203-495-8836
- WATER**
SOUTH. CT. REGIONAL WATER AUTHORITY
90 SARGENT DRIVE
NEW HAVEN, CT
1-203-654-3119
- GAS SERVICE**
THE SOUTHERN CONNECTICUT GAS CO.
60 MARSH HILL ROAD
ORANGE, CT
1-866-268-2887

**IMPORTANT! READ!
WARNING AND DISCLAIMER OF LIABILITY
UNDERGROUND UTILITIES**

The user of this document is WARNED NOT TO RELY on the purported accuracy, scale, dimension, measurement, descriptions, or elevations of any underground structure.

The underground structures depicted hereon are for informational purposes only. The Preparer of this document DISCLAIMS ANY LIABILITY whatsoever to the user. There are no warranties or representations, expressed or implied and any use other than for informational purposes is excessive, unintended and an impermissible misuse of this document.

Before Excavating Call Toll Free 1-800-922-4455 for Underground Utility Information. Please call 48 hours before service is required on jobsite.

REV 1 PJE
11/1/2022
CORRECTIONS
AS SHOWN

Consulting Engineers:

MUSCO ENGINEERING ASSOCIATES
375 Morgan Lane, Unit 307
West Haven, CT 06516
(203) 932-1901 FAX (203) 931-1550
www.muscoengineering.com

The information contained herein is the proprietary and confidential property of Musco Engineering Associates. Reproductions, publication, distribution or duplication in whole or in part requires the written permission of the above parties.
© Copyright 2020. All Rights Reserved.

**ROADWAY LIGHTING PLAN -
MAIN STREET AREA
EAST HAVEN, CONNECTICUT
PHASE V**

PREPARED FOR:
TOWN OF EAST HAVEN

NAFIS & YOUNG ENGINEERS, INC.
1355 Middletown Avenue
Northford, Connecticut 06472
Phone: (203) 484-2793
Fax: (203) 484-7343
Email: nyeng@nafisandyoung.com

JOB NO. SHEET NO. B6



UI Standards, Installation Procedures for Underground-Fed Lighting (UI's Outdoor Lighting Program)

Prior to your construction, please contact UI's Construction Manager:

Two Antennae	Brew River	Will Schabert
Anthony.Antunovic@ui.com (203) 944-4097 - office (203) 334-8178 - cell	bruce.becus@ui.com (203) 494-2657 - office (203) 555-7481 - cell	william.schabert@ui.com (203) 499-7391 - office (203) 215-2966 - cell
East Haven Hamden New Haven North Haven North Branford	Easton Fairfield Meriden Shelton Stamford Derby Ansonia	Orange Milford West Haven Woodbridge

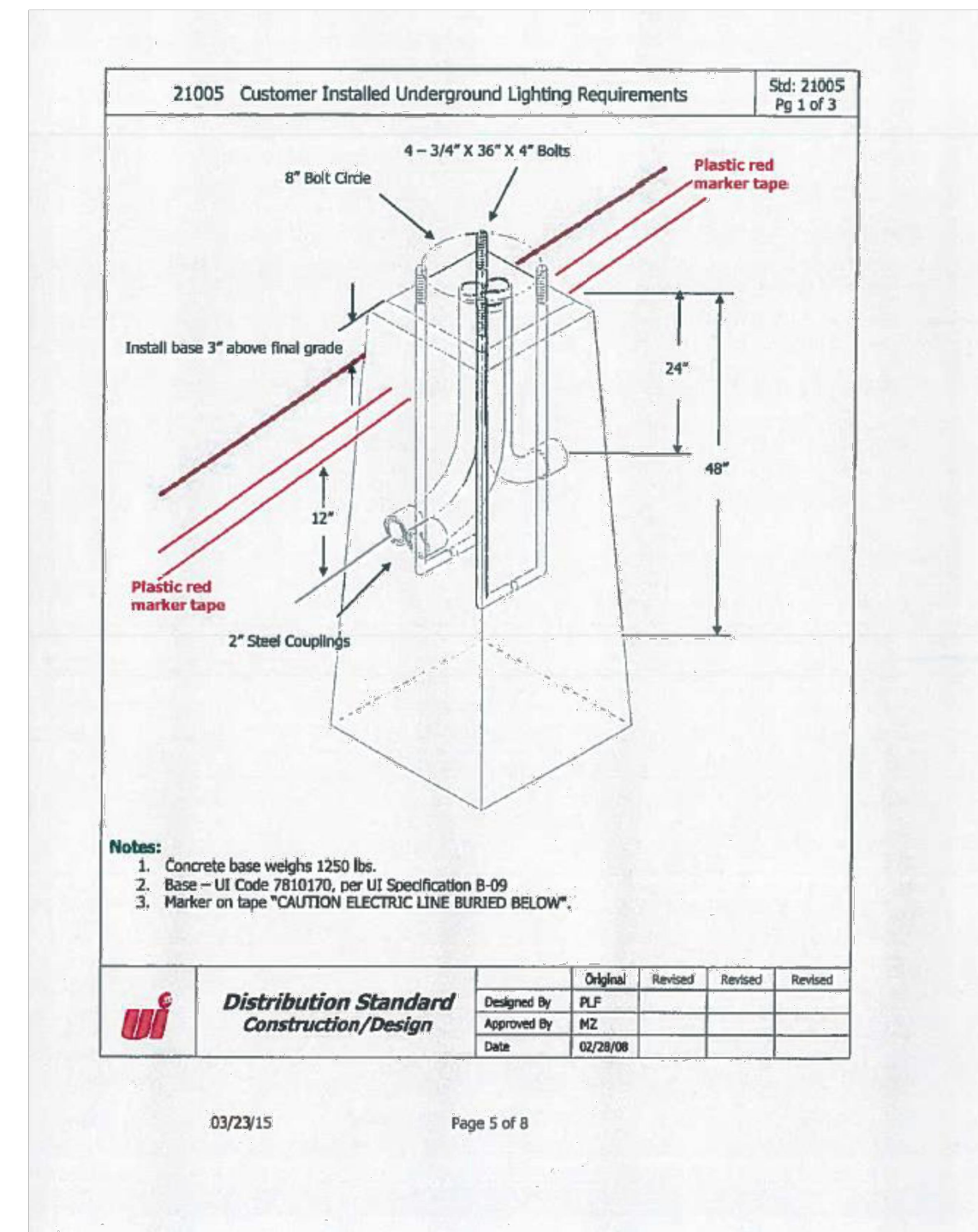
Customer's Responsibilities

- Customer to provide UI with site drawing. UI Engineer will provide electrical trenching & wiring drawing.
- The customer is responsible for supplying all material to the conduit system. UI will provide concrete bases to the customer to install. UI will provide and install all wire and lights.
- Customer to install concrete bases that will be delivered to the site by UI.
- Provide and install all 2" PVC (Schedule 40) and tag-lines to appropriate power source as shown on a UI electrical trenching and wiring drawing that will be provided by UI Engineer. Galvanized steel or concrete encased PVC is usually required under roadway and/or paved parking areas. This will be shown on UI's electrical trenching and wiring drawing. *See UI Standard #21005 attached.*
- An adapter mate PVC 2" coupling is required to attach PVC to the concrete base. *Duct tape is not acceptable.* Concrete bases should be installed approximately 2" above final grade. *See UI Standard #21005 attached.*
- If riser poles are involved, the Customer is to provide necessary 2" galvanized steel conduit for ALL sections of the pole and associated material (standoff brackets, threadless weatherhead, "U" bolts, and tag bolts). Customer to install first ten feet of conduit, UI to install the remaining material (all provided by Customer). *See UI Standard #18001 attached.*
- Tag-lines must be a minimum of 400 lb test. Tag-lines should not be installed until all glue has dried in conduit. *See UI Standard #21005 attached, Item J.*
- Care must be taken when backfilling the trench. Many times PVC is crushed by backfill. *See UI Standard #21005 attached, Items F & H.*
- When stubbing conduit into an underground transformer or secondary pedestal, you must contact your Construction Manager for assistance in excavation and tag-line. *See UI Standard #21005 attached, Item K.*
- UI electrical trenching and wiring drawing (provided by UI Engineer) cannot be changed without the approval of the Underground Construction Manager.
- All trenches and base installation **MUST** be inspected by UI's Underground Construction Manager **PRIOR** to back-filling.

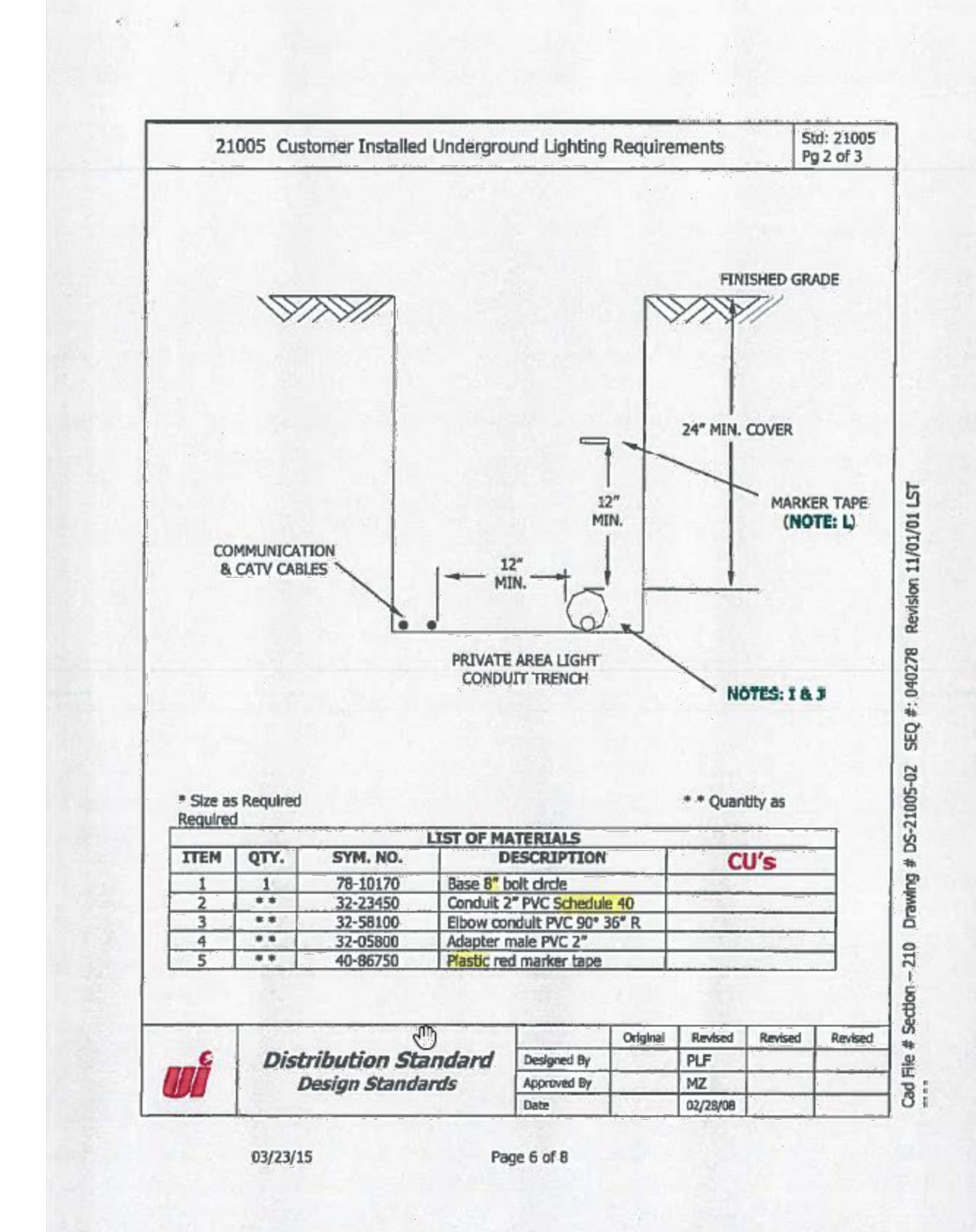
In the event UI's equipment is damaged, the Customer/Developer will be held financially responsible for UI's damaged material. This includes bases, shafts, fixtures, transformers, etc. If the base studs are damaged, the studs cannot be repaired; the entire base must be replaced at the Customer/Developer's expense.

Should any problems be encountered during construction, please contact your Underground Construction Manager.

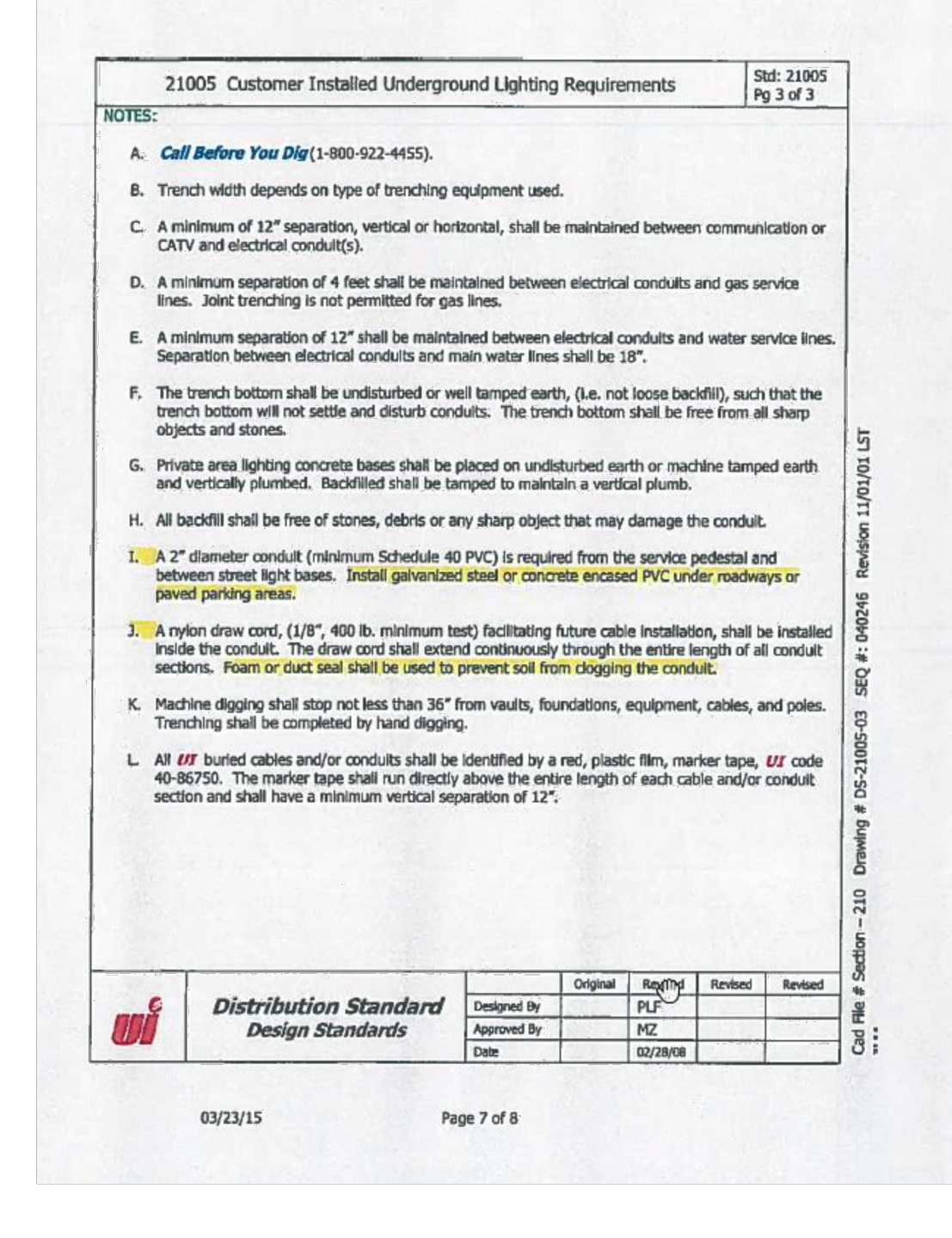
Revised June 6, 2020-up



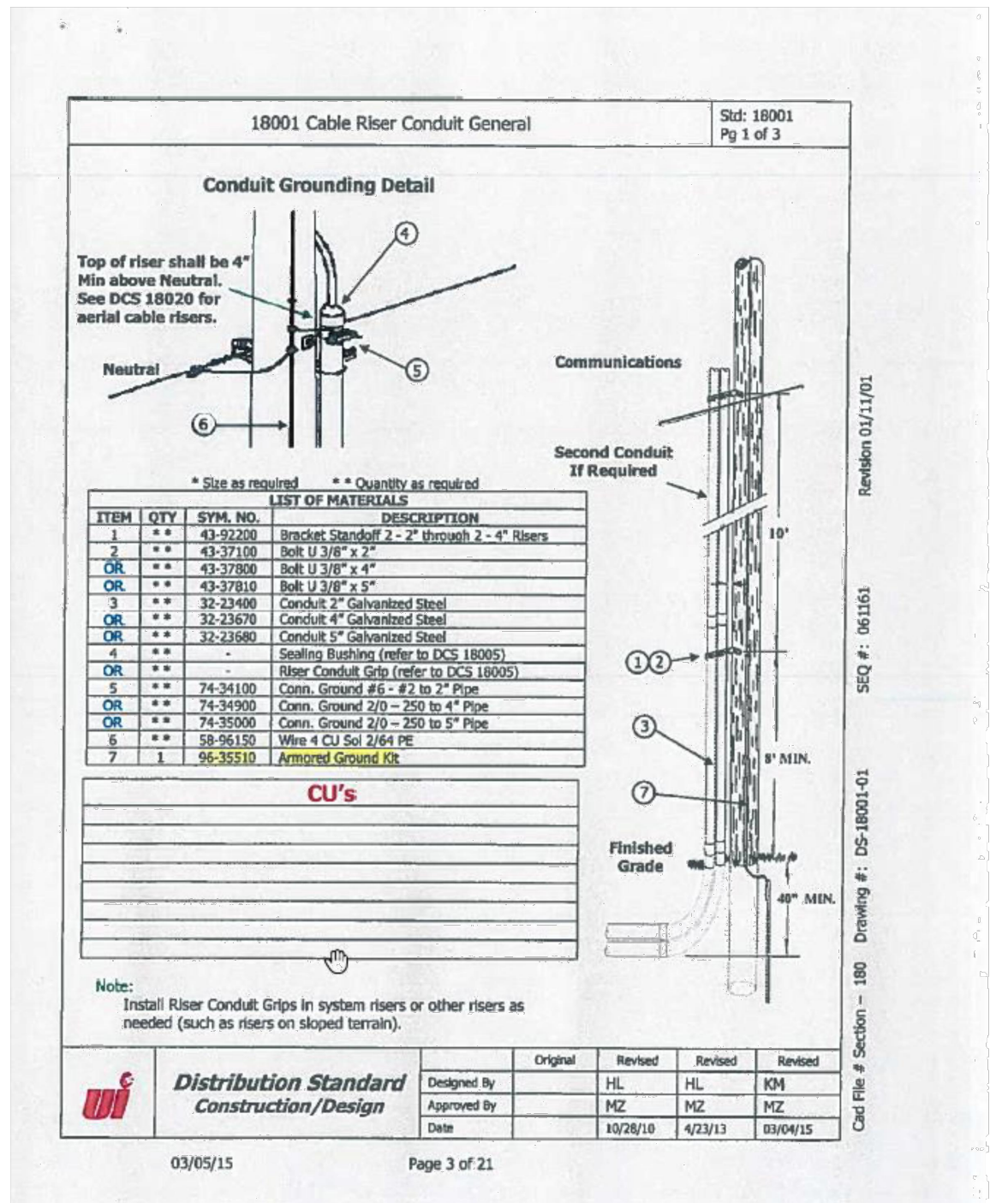
TYPE "LA" & "CFA" BASE DETAIL



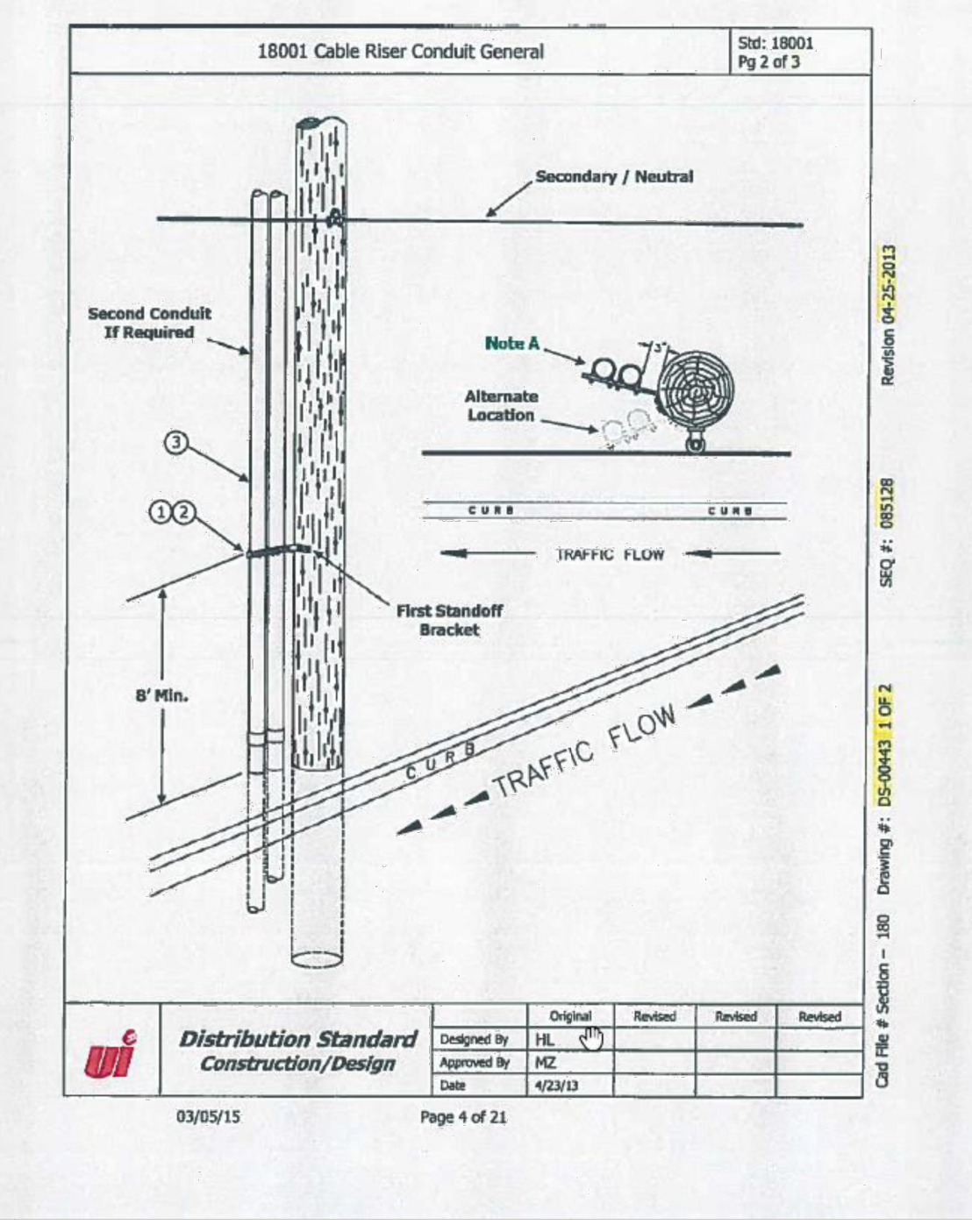
21005 Customer Installed Underground Lighting Requirements



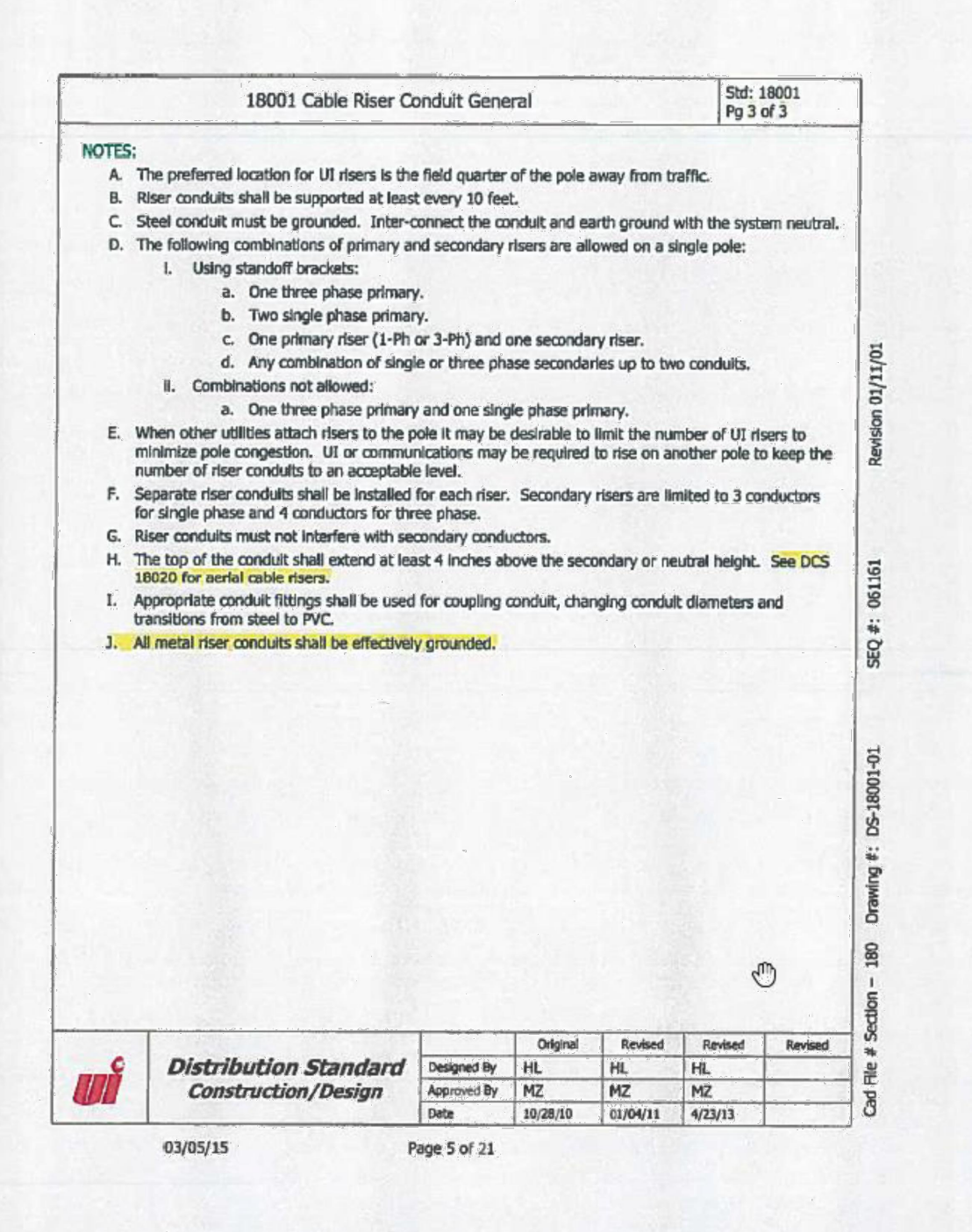
21005 Customer Installed Underground Lighting Requirements



18001 Cable Riser Conduit General



18001 Cable Riser Conduit General



18001 Cable Riser Conduit General

LOCATION AND ELEVATION OF UNDERGROUND UTILITIES UNLESS OTHERWISE NOTED IS UNKNOWN AND SHOULD BE FIELD VERIFIED BY CONTRACTOR PRIOR TO CONSTRUCTION

ANY USE OR REUSE OF ORIGINAL OR ALTERED CAD DESIGN MATERIALS BY THE CLIENT, CONTRACTOR OR OTHER PARTIES WITHOUT THE REVIEW AND WRITTEN APPROVAL OF AN AUTHORIZED REPRESENTATIVE OF NAFIS & YOUNG ENGINEERS, INC. SHALL BE AT THE SOLE RISK OF CLIENT, CONTRACTOR, OR OTHER PARTY AGREEING TO SERVICE, INDemnITY, AND HOLD NAFIS & YOUNG ENGINEERS, INC. HARMLESS FROM ALL CLAIMS, INJURIES, DAMAGES, LOSSES, EXPENSES AND ATTORNEY'S FEES ARISING OUT OF THE MODIFICATION OR REUSE OF THESE MATERIALS.

REV 1 PJE
11/1/2022
CORRECTIONS
AS SHOWN

Consulting Engineers:

MUSCO ENGINEERING ASSOCIATES

375 Morgan Lane, Unit 307
West Haven, CT 06516
(203) 932-1901 FAX (203) 931-1550
www.muscoengineering.com

The information contained herein is the proprietary and confidential property of Musco Engineering Associates. Reproduction, publication, distribution or duplication in whole or in part requires the written permission of the above parties.
© Copyright 2020, All Rights Reserved.

UTILITY COMPANY STANDARDS, DETAILS AND NOTES

MAIN STREET AREA EAST HAVEN, CONNECTICUT PHASE V

PREPARED FOR:
TOWN OF EAST HAVEN

NOVEMBER 11, 2020

NAFIS & YOUNG ENGINEERS, INC.

1355 Middletown Avenue
Northford, Connecticut 06472
Phone: (203) 484-7343
Fax: (203) 484-7343
Email: nyeng@nafisandyoung.com

JOB NO. 14-066

SHEET NO. 87

